

# Watershed Resources Registry

A collaborative tool designed to inform regulatory and environmental planning purposes

November 12-14, 2024

MAWWG-NEBAWWG Joint Meeting

Katheryn Barnhart, [Barnhart.Katheryn@epa.gov](mailto:Barnhart.Katheryn@epa.gov)

# What is a Watershed Resource Registry (WRR)?

Multi-faceted tool developed primarily to help federal and state agencies improve decision making for environmental resources, particularly those covered by CWA

# 3 Main Components

Collaborative Team (Technical  
Advisory Committee)

Interactive Online Map with  
integrated tools

Original Geospatial Analyses

# Current membership

Federal Partners  
(EPA, USACE,  
USFWS, FHWA)

State Agencies  
(DOTs,  
DEP/DEQs,  
DNRs)

# 3 Main Components

Collaborative Team (Technical  
Advisory Committee)

Interactive Online Map with  
integrated tools

Original Geospatial Analyses

<https://watershedresourcesregistry.org/>



Watershed Resources Registry

Developing A Registry State Registries ▾ Contact Us More Info ▾ FAQs



## Build Your Own Registry

Click here to learn more about starting a registry in your state

## Welcome

***Welcome to the Watershed Resources Registry website! This is an informational site about the WRR Initiative and an access point for state specific WRRs.***

The WRR Initiative began with a desire to create a tool for environmental professionals that would allow them to identify potential sites for restoration and/or preservation. One of the central goals for this Initiative was to shift mitigation away from a piecemeal approach and towards a more holistic strategy. The resulting products of the endeavor are a series of Watershed Resource Registries (or WRRs). These are state-specific preservation and restoration models displayed on an interactive online mapping tool.

# Watershed Resources Registry

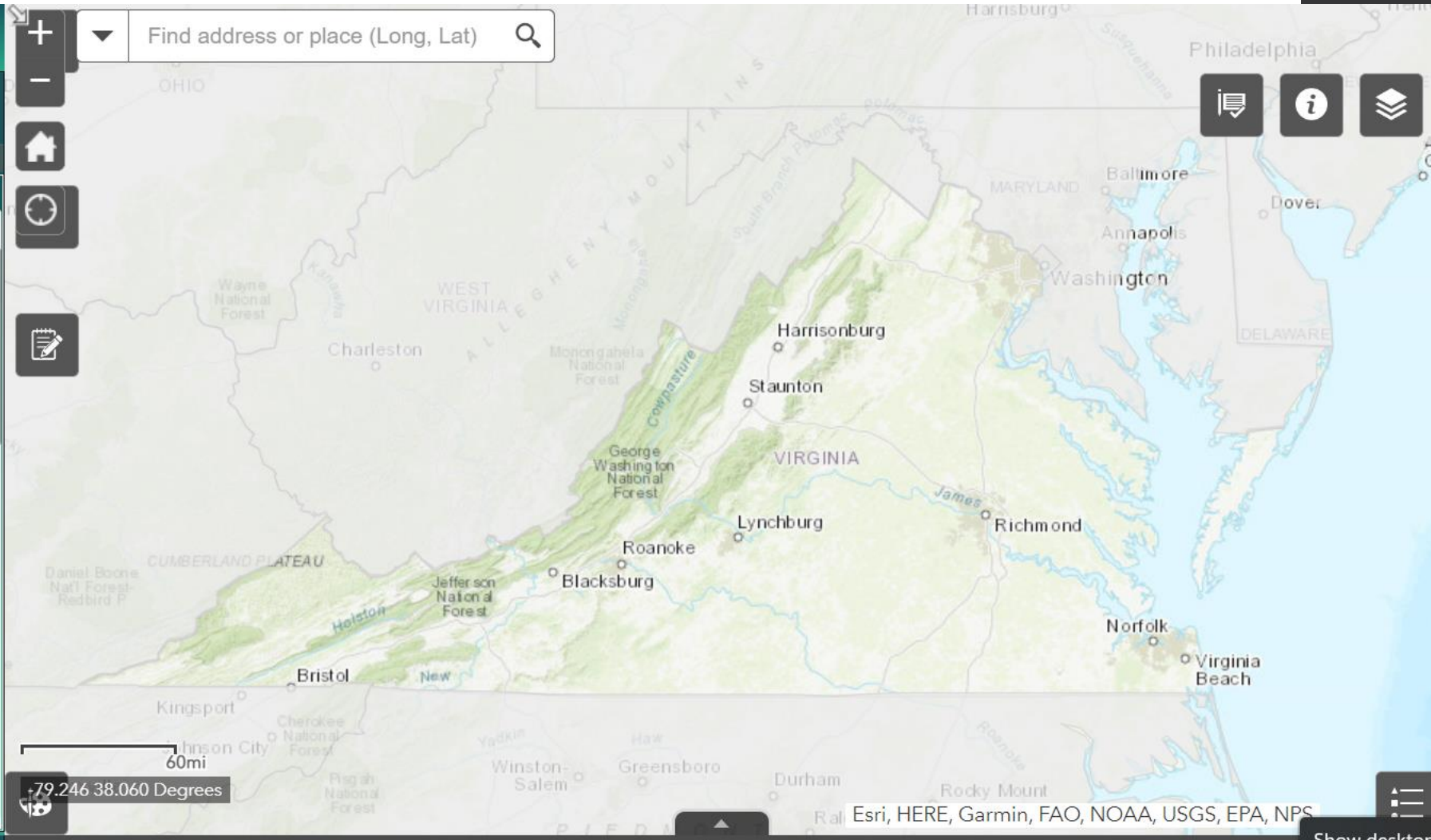


## WRR Layer List

Expand All Folders

### WRR Suitability Analyses

- Riparian Preservation ...
- Riparian Restoration ...
- Stormwater Compromised Infrastructure Restoration ...
- Stormwater Natural Infrastructure Preservation ...
- Upland Preservation ...
- Upland Restoration ...



Show desktop

# Create Custom Location Details Report



Identify what layers to include in report



Identify what attribute information from each layer to pull for report








Able to draw an area on the map and push a button.

PennDOT/USACE Location Details

AOI +

Draw Shapefile

Select draw mode

Buffer distance (optional)

Show results within  Feet ▼

NEPAssist WRR Report Start Over





# Screening Report

## Area of Interest (AOI) Information

Area : 121.67 acres

Lat/Long: 38.8286, -75.5261



May 6, 2021



County of Sussex, DE, Delaware Publicly Owned Water Assets Inventory (DPAWI) - 2018  
 Delaware Department of Natural Resources and Environmental Control (DNREC) - 2018  
 Delaware Department of Transportation (DOT) - 2018  
 Delaware Department of Agriculture (DDA) - 2018  
 Delaware Department of Health and Social Services (DHSS) - 2018  
 Delaware Department of Education (DEDE) - 2018  
 Delaware Department of State - 2018  
 Delaware Department of Transportation (DOT) - 2018  
 Delaware Department of Agriculture (DDA) - 2018  
 Delaware Department of Health and Social Services (DHSS) - 2018  
 Delaware Department of Education (DEDE) - 2018  
 Delaware Department of State - 2018

## Summary

Name	Count	Clipped Area (acres)	Clipped Length (mi)
Wetland Restoration	10	51.13	N/A
Wetland Preservation	4	22.68	N/A
Upland Restoration	11	48.19	N/A
Upland Preservation	13	88.96	N/A
Riparian Restoration	3	8.21	N/A
Riparian Preservation	5	13.3	N/A
Stormwater Compromised Infrastructure Restoration	0	0	N/A
Stormwater Natural Infrastructure Preservation	4	68.47	N/A
Leaking Tanks	0	N/A	N/A
Certified Brownfield Sites	0	N/A	N/A
SIRB Sites	0	N/A	N/A
Large Spray Irrigation Sites	0	0	N/A
Delaware Wetlands 2007 (NW)	10	26.52	N/A
Natural Areas	1	75.73	N/A
FEMA Flood Maps	0	0	N/A
Airports	0	N/A	N/A
Delaware Ecological Network	1	73.53	N/A
Flood Risk Adaptation Map	0	0	N/A
Tax Ditch Areas	1	121.67	N/A
Water Flow Lines	1	N/A	0.45
Water Polygons	0	0	N/A
HUC 8	1	121.67	N/A
HUC 12	1	121.67	N/A
Nature Preserves	0	0	N/A
Historic Markers	0	N/A	N/A
303(d) Streams	0	N/A	0
319 Watersheds	1	121.67	N/A
NPDES Outfalls	0	N/A	N/A

## Wetland Restoration

#	Score	Clipped Area (acres)
1	3	28.03
2	2	13.04
3	1	9.62
4	4	0.44

## Wetland Preservation



Find address or place (Long, Lat)



Add Data

Search

URL

File

MD iMAP Data

Search...



Within map...

Type

Relevance



Maryland LiDAR Statewide - DEM Feet

Image Service by mdimapdatacatalog

ADD DETAILS



Maryland Six Inch Imagery - Image Service

Image Service by mdimapdatacatalog

ADD DETAILS



Maryland LiDAR Statewide - Slope RGB

Image Service by mdimapdatacatalog

ADD DETAILS



Maryland Three Inch Imagery - Image Ser...

Image Service by mdimapdatacatalog

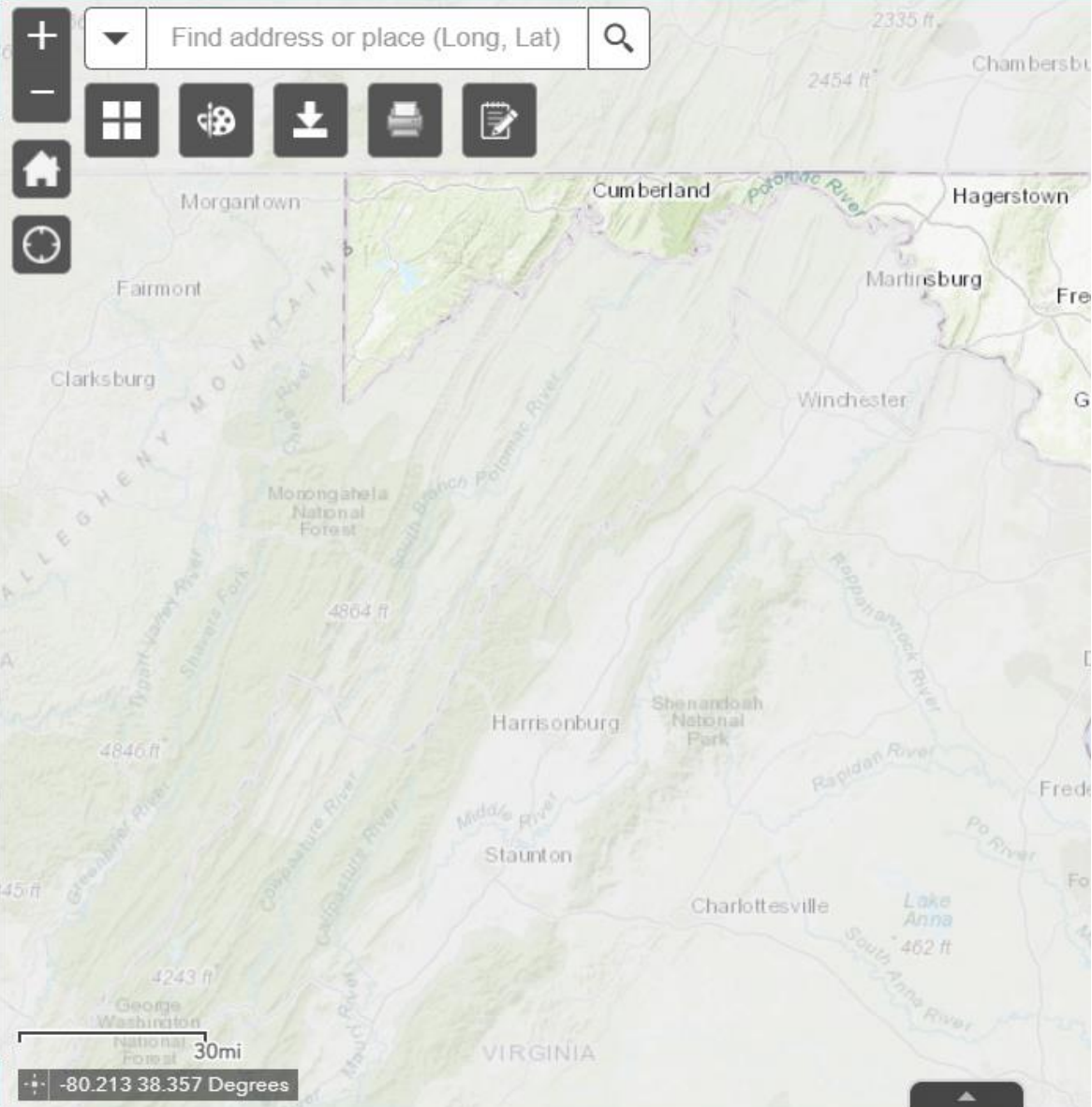
ADD DETAILS

MD iMAP

Maryland Historic NAIP Imagery - 2011

<< < 1 > 1,068 Items

LAYERS



Add your own data to include in analyses

# Three Main Components

Collaborative Team (Technical Advisory Committee)

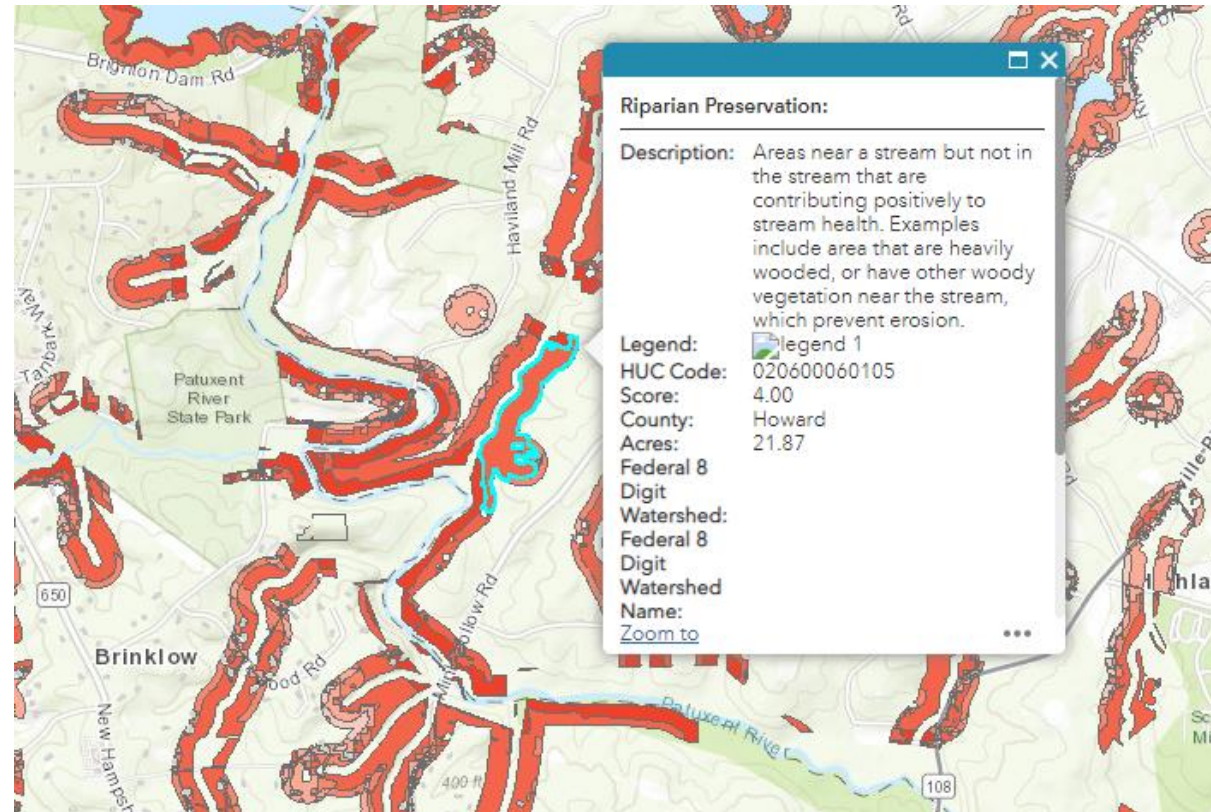
Interactive Online Map with integrated tools

Original Geospatial Analyses

# Suitability Analyses

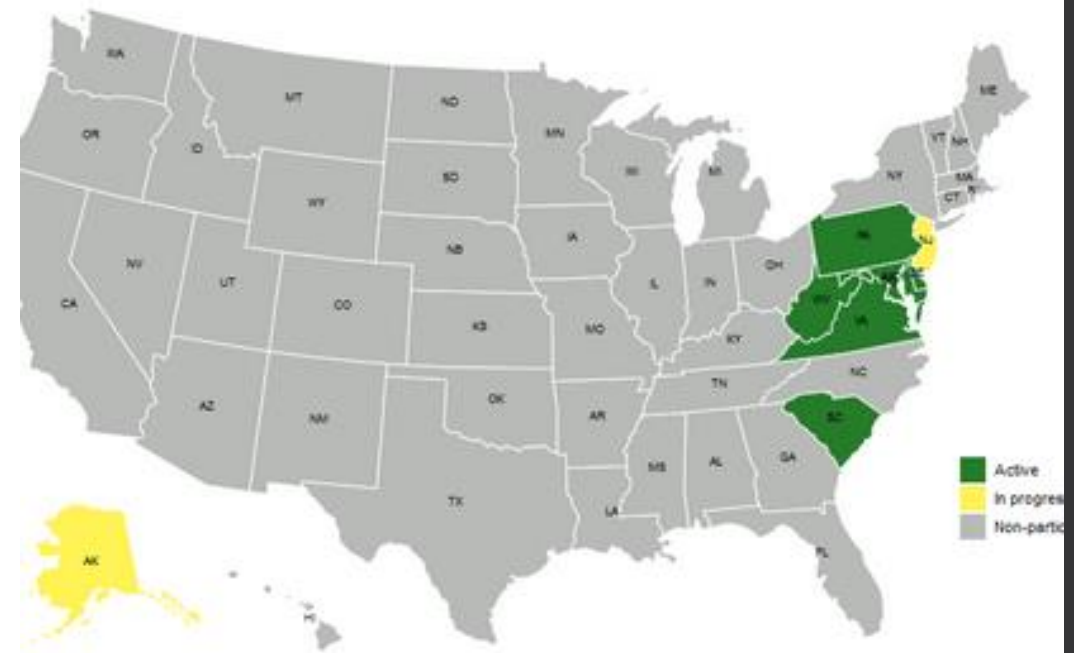
**WRR Suitability Analyses**

- Riparian Preservation ...
- Riparian Restoration ...
- Stormwater Natural Infrastructure Preservation ...
- Stormwater Compromised Infrastructure Restoration ...
- Upland Preservation ...
- Upland Restoration ...
- Wetland Preservation ...
- Wetland Restoration ...



# Current Status of WRRs Across Regions

- **R3:**
  - Delaware, Maryland, Pennsylvania, Virginia and West Virginia
  - DC pending
- **R4:**
  - South Carolina
- **R2:**
  - Puerto Rico
  - New Jersey underway
- **R10:**
  - Alaska has “WRR-lite”
- R3 project designed to be able to be transferred across the country





# Brief overview of process to create one in your state

## 6 Phases

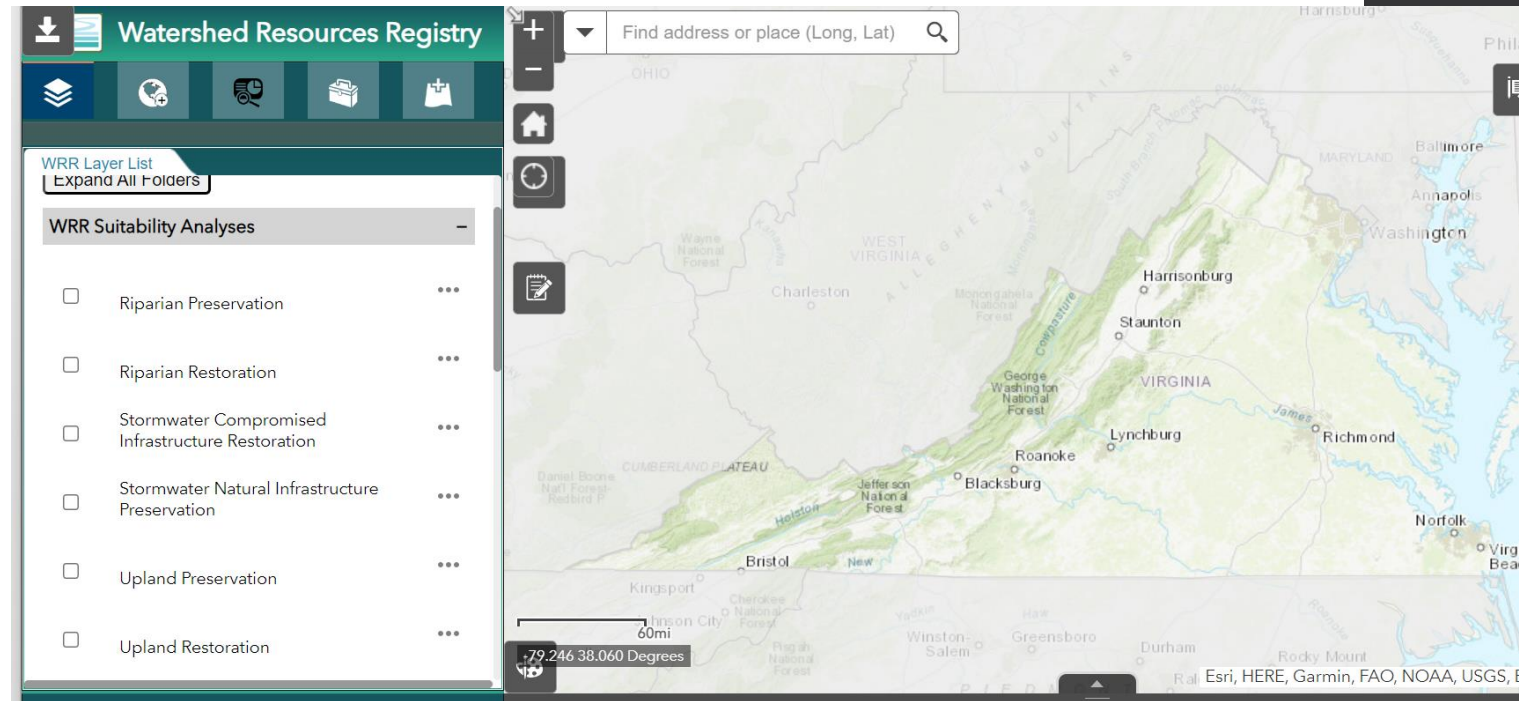
1. Form a TAC team
2. Launch Interactive Map
3. Conduct outreach and training
4. Deliberate on desired geospatial analyses
5. Create statewide analyses
6. Maintenance



# Brief overview of process to create one in your state

## 6 Phases

1. Form a TAC team
2. Launch Interactive Map
3. Conduct outreach and training
4. Deliberate on desired geospatial analyses
5. Create statewide analyses
6. Maintenance



# Brief overview of process to create one in your state

## 6 Phases

1. Form a TAC team
2. Launch Interactive Map
3. Conduct outreach and training
4. Deliberate on desired geospatial analyses
5. Create statewide analyses
6. Maintenance

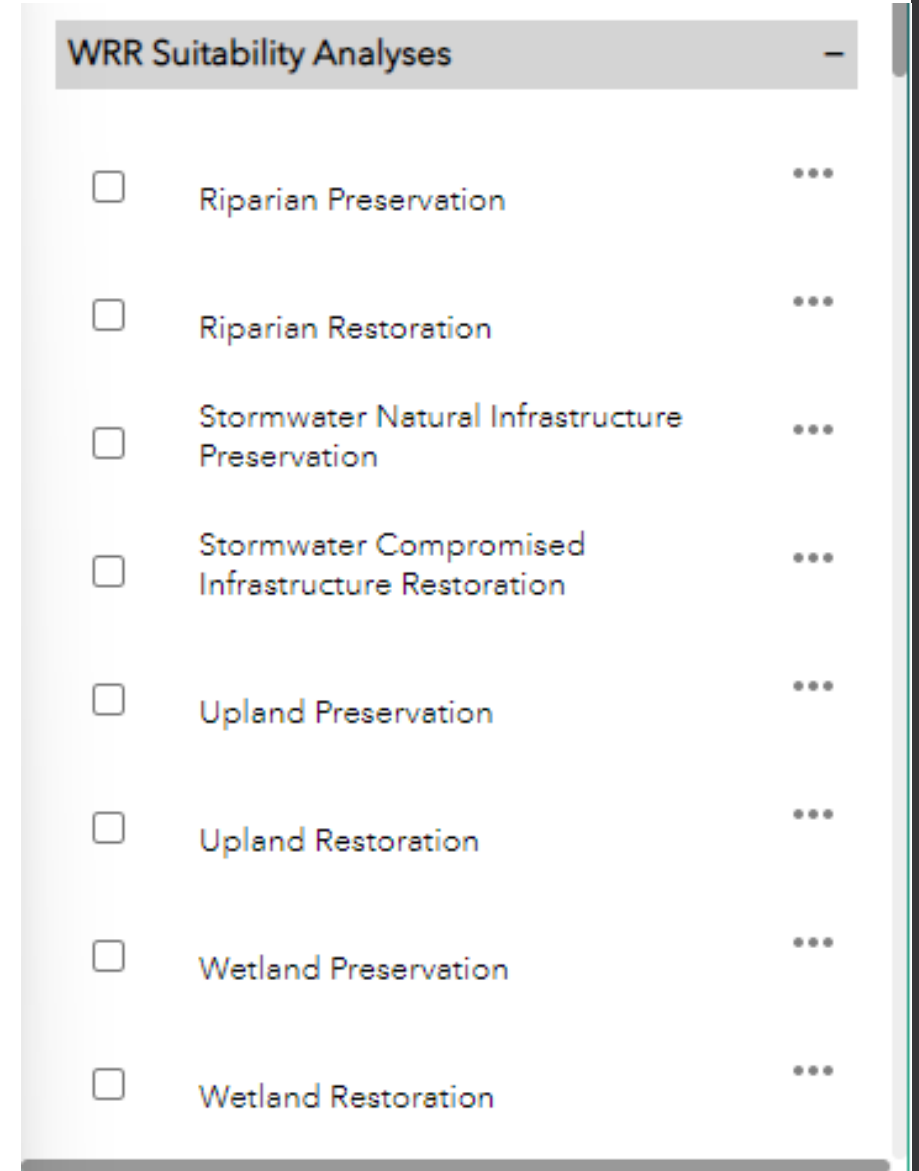




# Brief overview of process to create one in your state

## 6 Phases

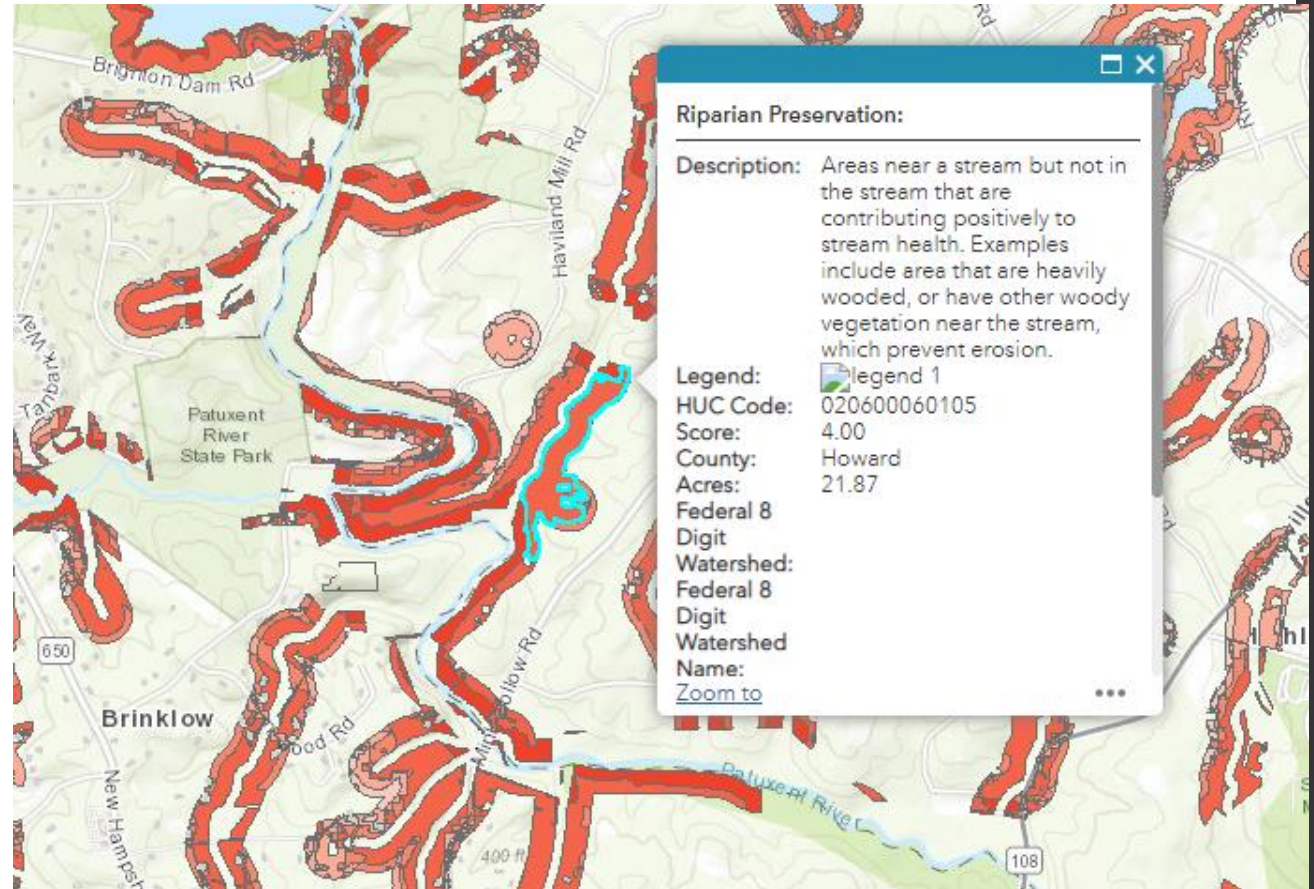
1. Form a TAC team
2. Launch Interactive Map
3. Conduct outreach and training
4. Deliberate on desired geospatial analyses
5. Create statewide analyses
6. Maintenance



# Brief overview of process to create one in your state

## 6 Phases

1. Form a TAC team
2. Launch Interactive Map
3. Conduct outreach and training
4. Deliberate on desired geospatial analyses
5. Create statewide analyses
6. Maintenance



# Brief overview of process to create one in your state

## 6 Phases

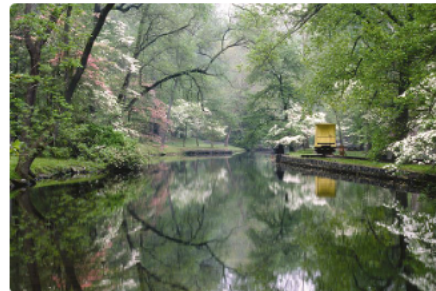
1. Form a TAC team
2. Launch Interactive Map
3. Conduct outreach and training
4. Deliberate on desired geospatial analyses
5. Create statewide analyses
6. Maintenance

## Delaware Registry

[Home](#) / [Delaware](#)

### Background

Delaware started its Watershed Resources Registry project in March of 2016. The Delaware team was inspired by neighboring Maryland. The collaborative effort included staff from Delaware's Department of Natural Resources and Environmental



Control and Department of Transportation, US Environmental Protection Agency Region 3, US Army Corps of Engineers Philadelphia District, US Fish and Wildlife Service, US Federal Highway Administration, and Delaware Center for the Inland Bays, among others. The project was funded in part by a US Federal Highways Administration grant. If you're interested in learning more about Delaware's WRR project, please contact a representative below.



[View Map](#)

### Additional Resources

[Spatial Analyses](#)

[Listing of Map Services](#)

[User Guide](#)



[User Feedback Survey](#)

# Making the decision to develop a WRR

- R3 happy to work with EPA Regions 1&2 to help support interest in developing new statewide WRRs
- Contacts:
  - Katheryn Barnhart, EPA Region 3, [Barnhart.Katheryn@epa.gov](mailto:Barnhart.Katheryn@epa.gov)
  - Christine Mazzarella, EPA Region 3, [Mazzarella.Christine@epa.gov](mailto:Mazzarella.Christine@epa.gov)

Questions?