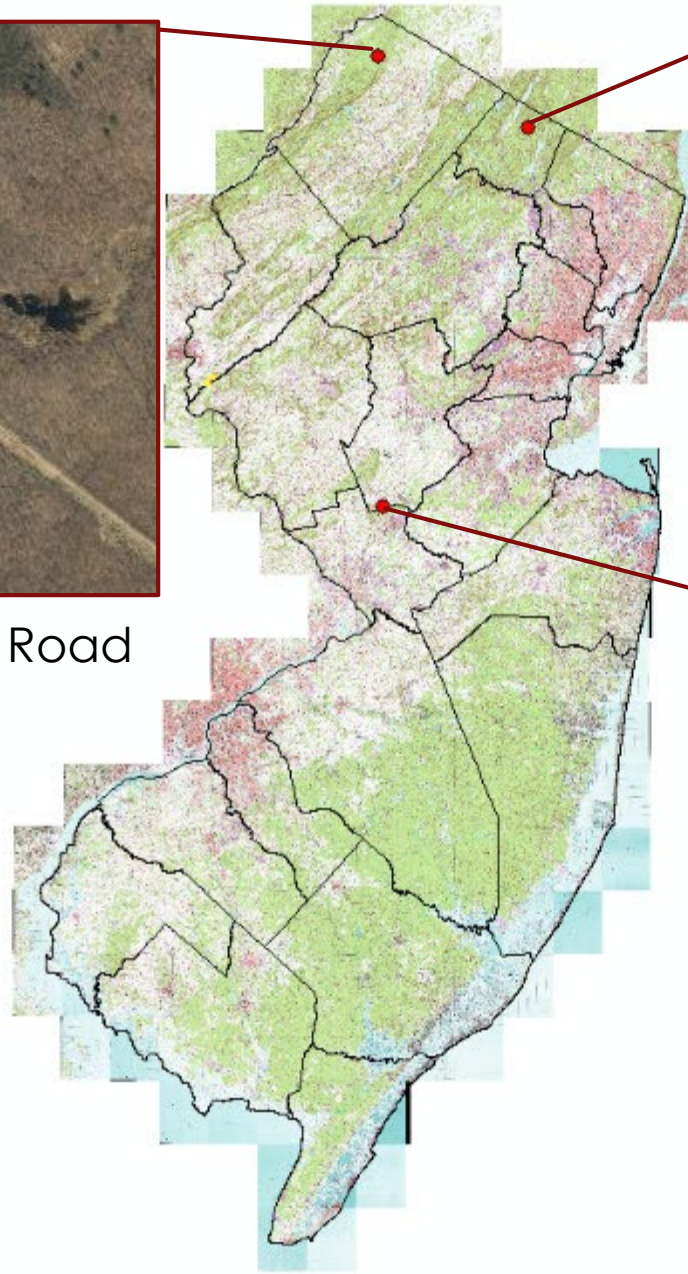




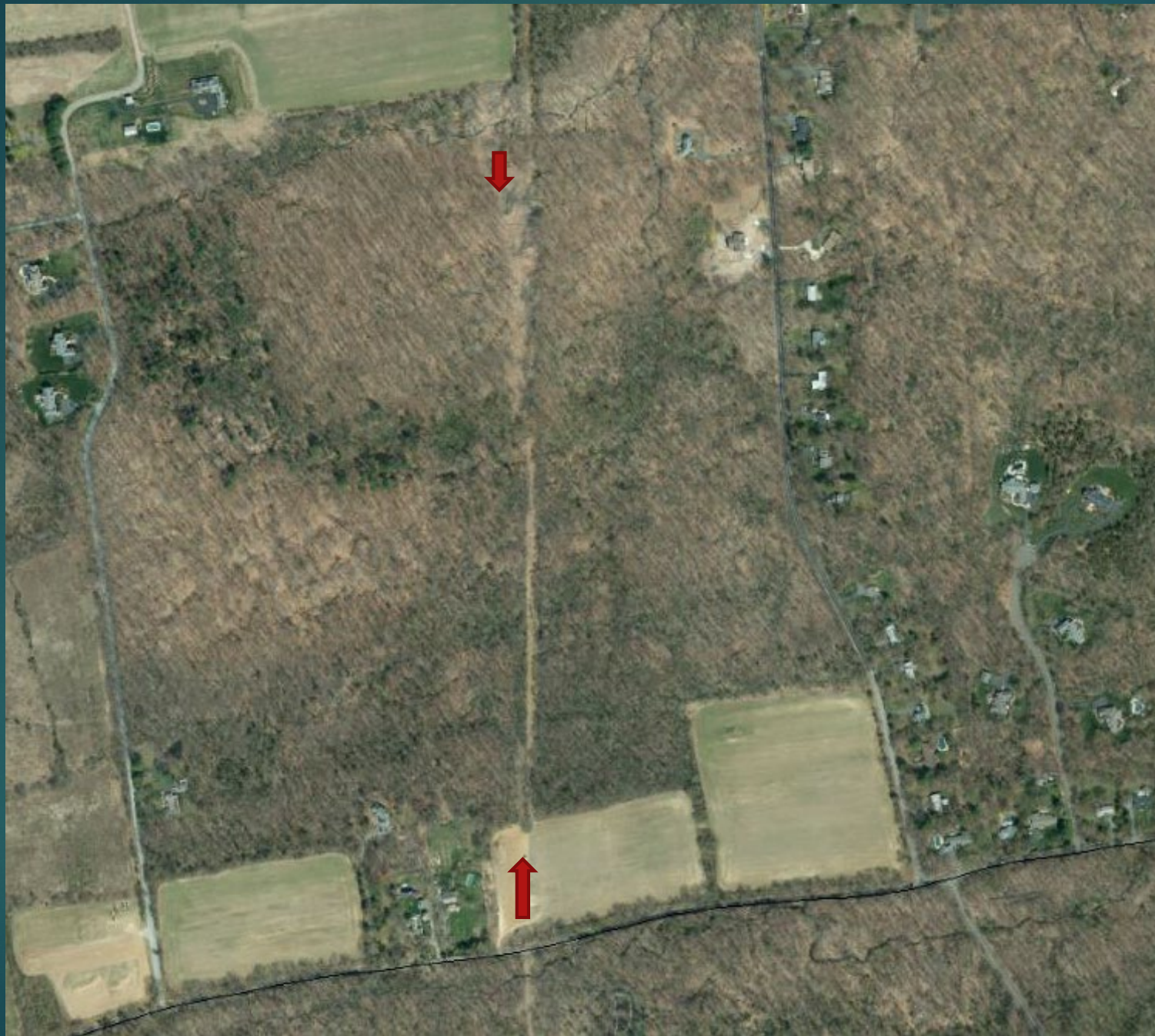
Highpoint - Saw Mill Road



Monksville



Skillman



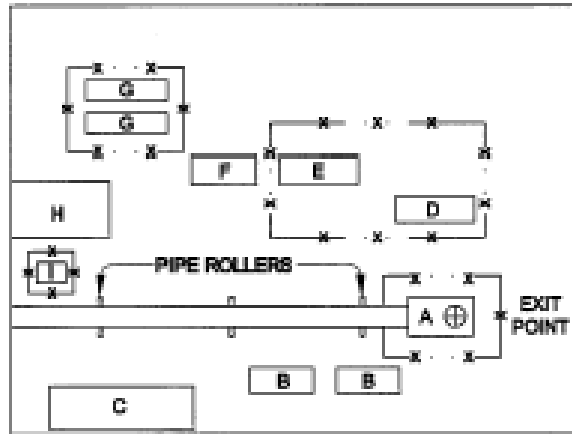






NOT TO SCALE

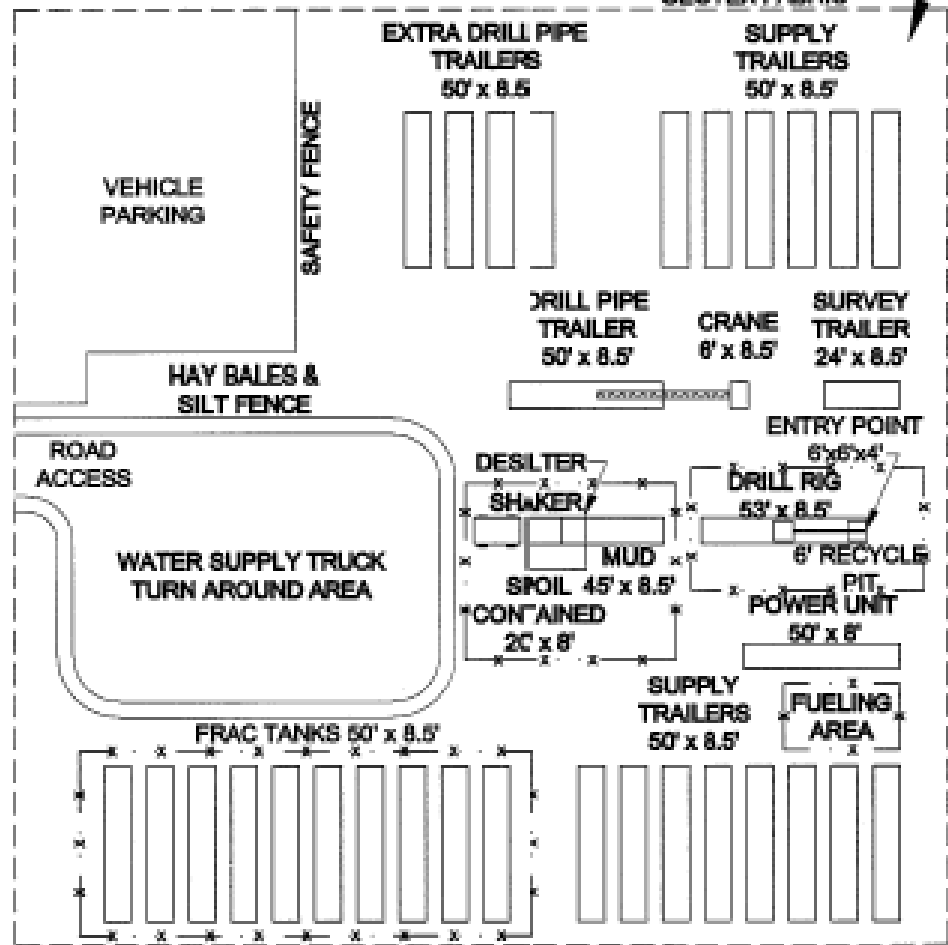
TYPICAL EXIT SITE



- A = EXIT PIT
- B = LIFT EQUIPMENT
- C = WELDING AREA
- D = PIT
- E = MUD CLEANING
- F = GENERATOR
- G = FRAC TANKS
- H = PARKING/ROAD ACCESS
- I = FUELING AREA

LEGEND:
 — x — SPILL
 CONTAINMENT

TYPICAL ENTRY SITE
 EQUIPMENT LAYOUT



ENG. RECORD	DATE
DOWN	
DRAWING	
APPROVAL	
PROJECT	
APPROVAL	
SURVEY DATE:	
SCALE: NONE	
PROJECT ID:	
DWG. NAME:	



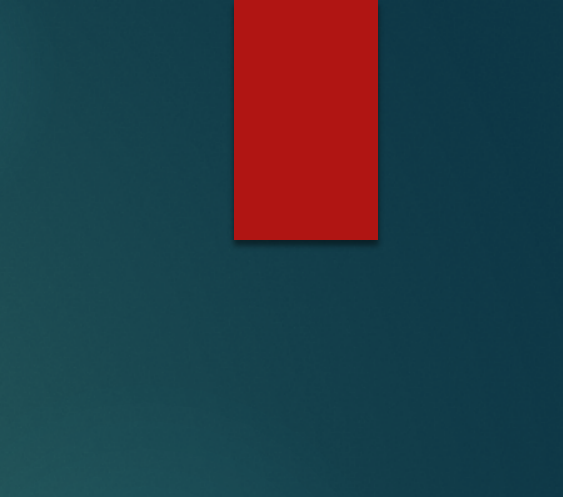
TYPICAL
 WORKSPACE LAYOUT
 HORIZONTAL DIRECTIONAL
 DRILL METHOD

DWG. NO.

DD1

REV.

DATE	BY	DESCRIPTION	PROJ. ID	APPR.







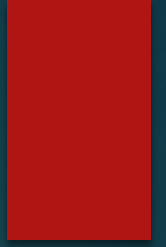












11 12 13 14 15 16 17 18 19 20 21 22 23 24 25 26 27 28 29 30 31 32 33 34 35

PASSAIC COUNTY, NEW JERSEY

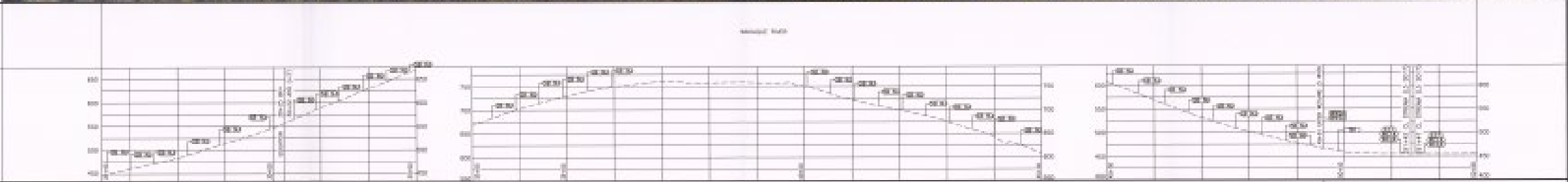
MIST HILFORD TOWNSHIP HINGWOOD BOROUGH



ALTERNATE STRIP MAP

PLAN

PROFILE



CONSTRUCTION TYPICAL REFERENCE SHEET: 10-114-000-0-TYP-1 3/08 2'

REVISIONS: 1. 10/11/08: REVISED TO REFLECT FIELD CHANGES

NO. 1	NO. 2	NO. 3	NO. 4	NO. 5	NO. 6	NO. 7	NO. 8	NO. 9	NO. 10
-------	-------	-------	-------	-------	-------	-------	-------	-------	--------

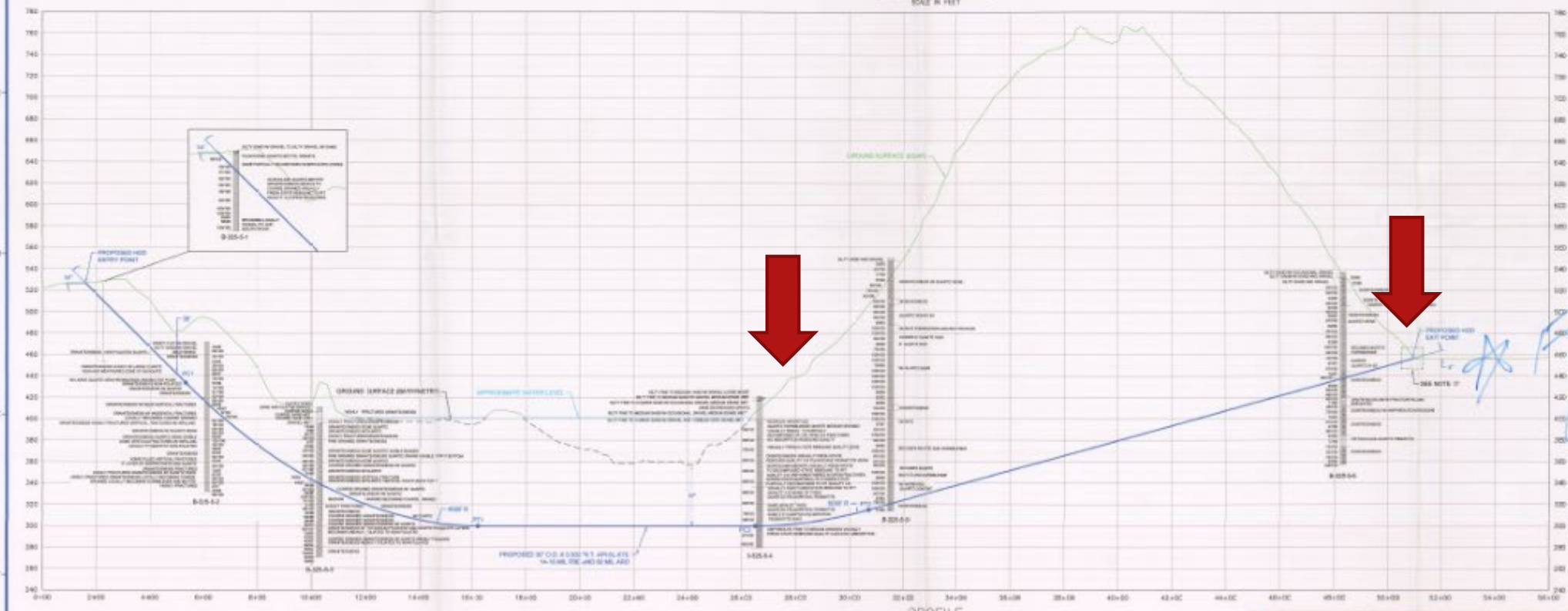
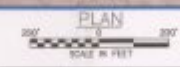
SECTION



APPROVED
10-114-000-0-TYP-1



DATE: 08/14/2013
 HORIZONTAL: NAD 83 UTM, ZONE 18N US FOOT
 VERTICAL: NAVD 83



DIRECTIONAL DRILL DATA		
WELLBORE #25 (1812) HED		
DESCRIPTION	STATION (+/-)	DEPTH (ft)
ENTRY @ 1"	1+66.00	605.70
9" C 1 (14.00' @ 5.00' S.R.)	5+35.00	483.87
9" T 1	15+21.80	388.28
9" C 2 (14.00' @ 5.00' S.R.)	29+21.20	389.88
9" T 2	39+89.87	314.62
EXIT @ 4"	50+11.82	405.00
HORIZONTAL DISTANCE = 4931.62 ft		
DIRECTIONAL DRILL PIPE LENGTH = 4939.23 ft		

- * STATIONING IS BASED ON ARBITRARY REFERENCE POINT
- DESIGN BASIS:
1. PRODUCT PIPE WILL CONSIST OF 30" O.D. x 0.390" WT, API-X 80-70 PIPE WITH 16-18 MILS OF FUSION BONDED EPXY (FBE) AND A MINIMUM OF 80 MILS OF ABRASION RESISTANT OVERLAY (ARO).
 2. MAXIMUM ALLOWABLE OPERATING PRESSURE (MAOP) = 1170 psf
 3. ASSUMED ALLOWABLE OPERATING TEMPERATURE = 70 FAWH/80 F
 4. MAXIMUM ALLOWABLE THREE JOINT RADIUS SHALL BE NO LESS THAN 0.400" AS CALCULATED BY THE METHOD INCLUDED IN THE HOPE SPECIFICATION. THE MAXIMUM ALLOWABLE JOINT RADIUS IS BASED ON A WELL THROUGH DIAMETER OF 0.300".

APPROVED

NR-1-4-2013

City of New Jersey
 Department of Environmental Protection
 Office of Pollution Control

BORING LEGEND

TYPE OF SOIL IN CAPS

INDICATES TYPE OF SOIL

Boring Location

③ Rec 3-14

NO.	DATE	BY	DESCRIPTION	FILED BY	APPN.
1	08/14/13	JAR	ISSUED FOR CONSTRUCTION	JAR	
2	08/14/13	JAR	ISSUED FOR CONSTRUCTION	JAR	

ISSUED FOR CONSTRUCTION





SUSSEX COUNTY, NEW JERSEY
MONTAGUE TOWNSHIP

