

Improving the Information Pipeline: A Resource to Help Regulators and Consultants Navigate the Linear Natural Gas Pipeline Permitting Process

Evan Hansen, President

Association of State Wetland Managers Webinar

July 18, 2018

**Downstream
Strategies**

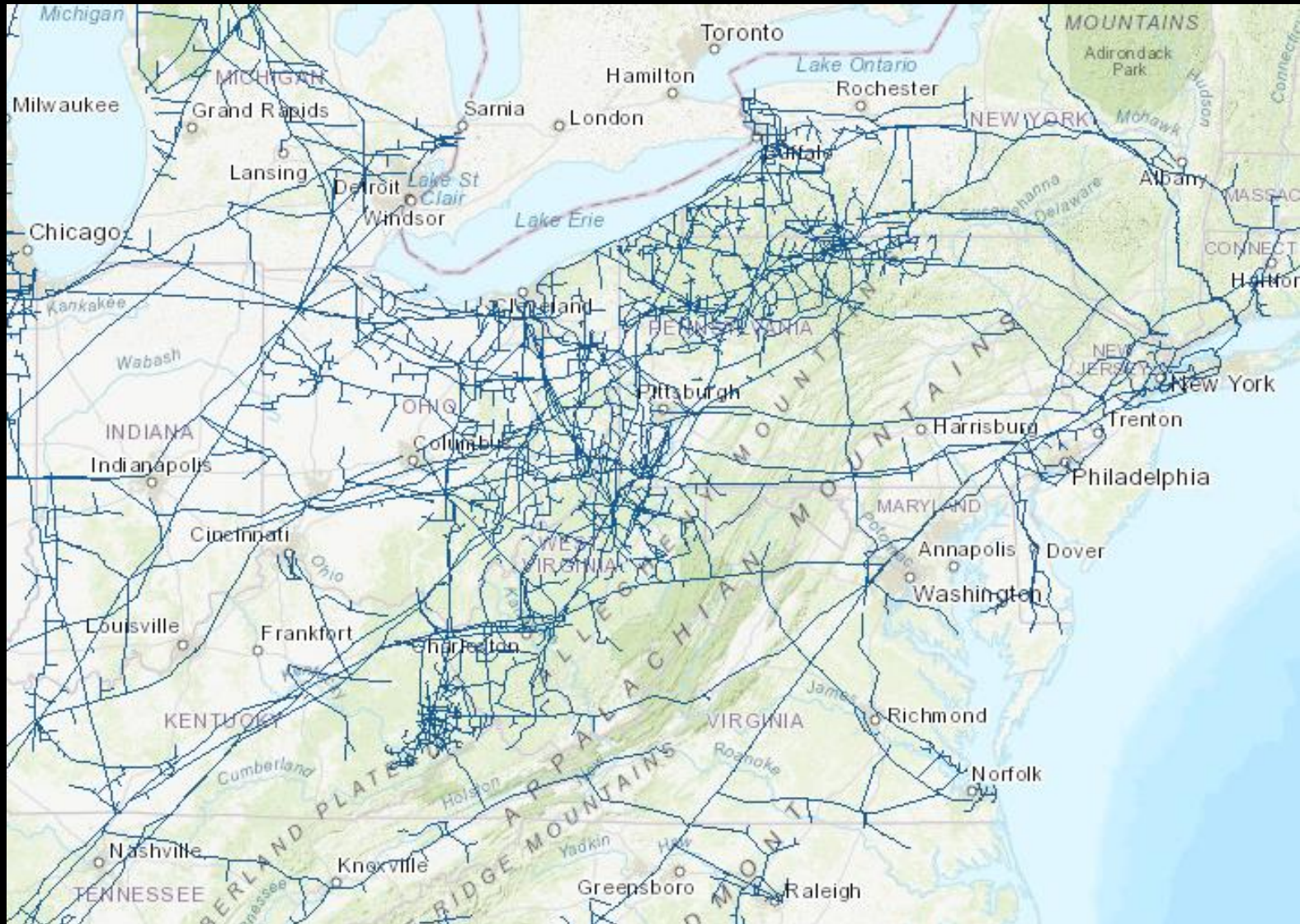


Ideas that sustain.

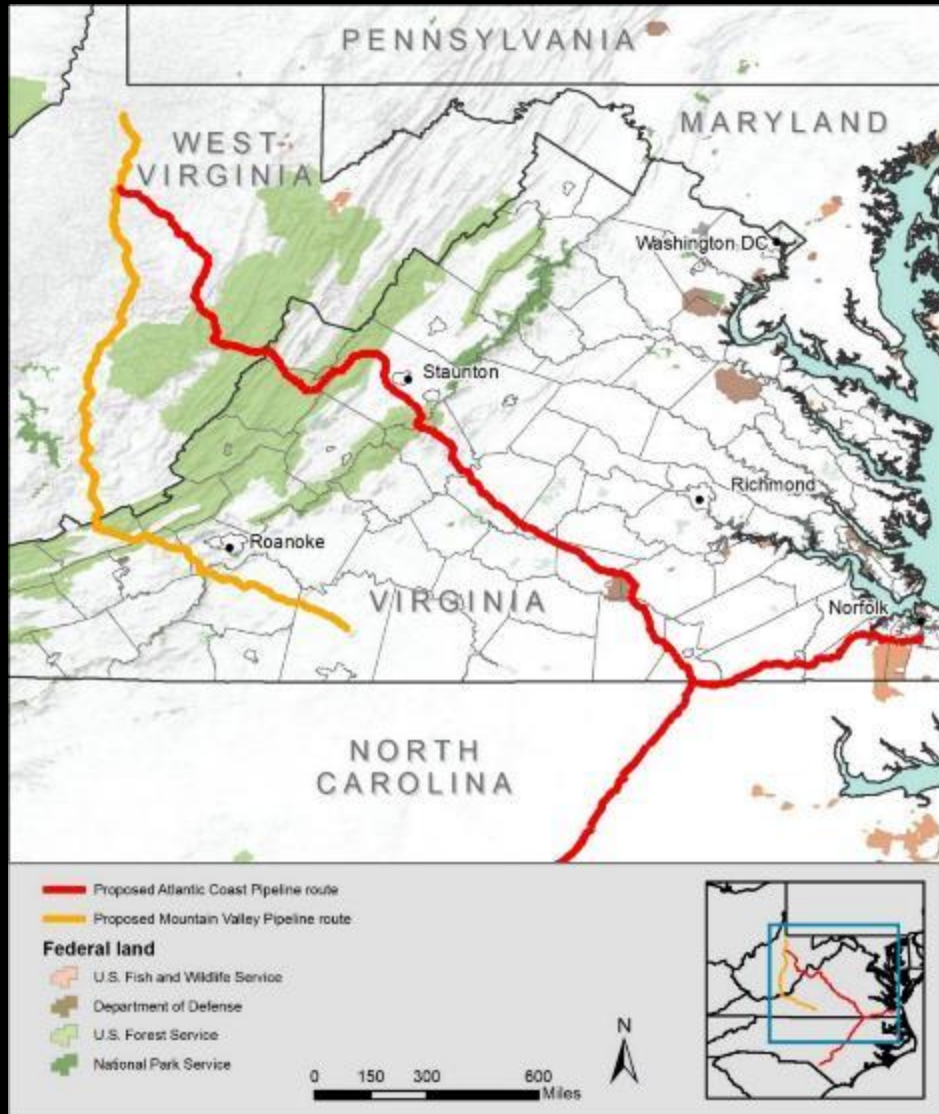
Tight Oil/Shale Gas Plays



Natural Gas Pipelines



Large Interstate Pipelines



The Need for this Resource

- Recent natural gas development
- Numerous new pipelines
- Unprecedented number of permit applications
- Miscommunications, lack of common language can lead to delays, inefficiencies, and poor protection of water resources

Checklists

- Each chapter ends with a checklist
- Key questions to get regulators and consultants on the same page

Don't Forget to Think About:

- Is the proposed activity covered under NWP 12, or is an individual permit required?
- Is a §401 Certification required for this project?
- Is the project also regulated by FERC and/or other state, county, and local laws, regulations, plans, or ordinances, and if so, how do these other regulatory processes impact the timeline?

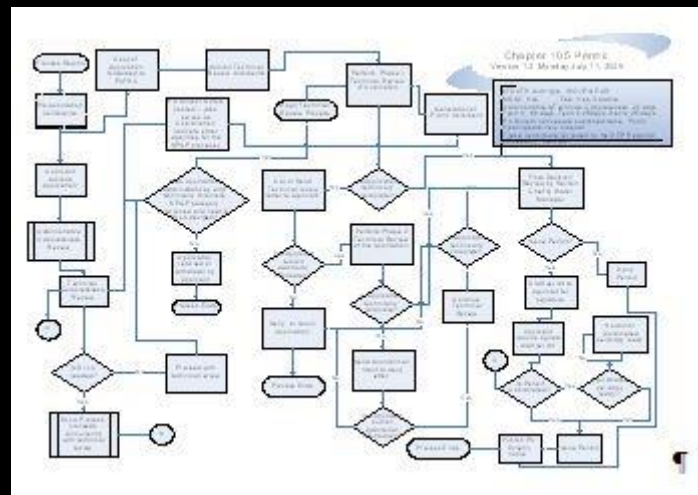
Working with Consultants Subworkgroup

- State agencies
- Federal agencies
- Consultants



Understanding the Permitting Process

- This resource focuses on:
 - Natural gas pipelines (not oil)
 - State §401 Certifications (not federal or local permits, certificates, regulations)
- Process maps



Pipeline Terms and Language

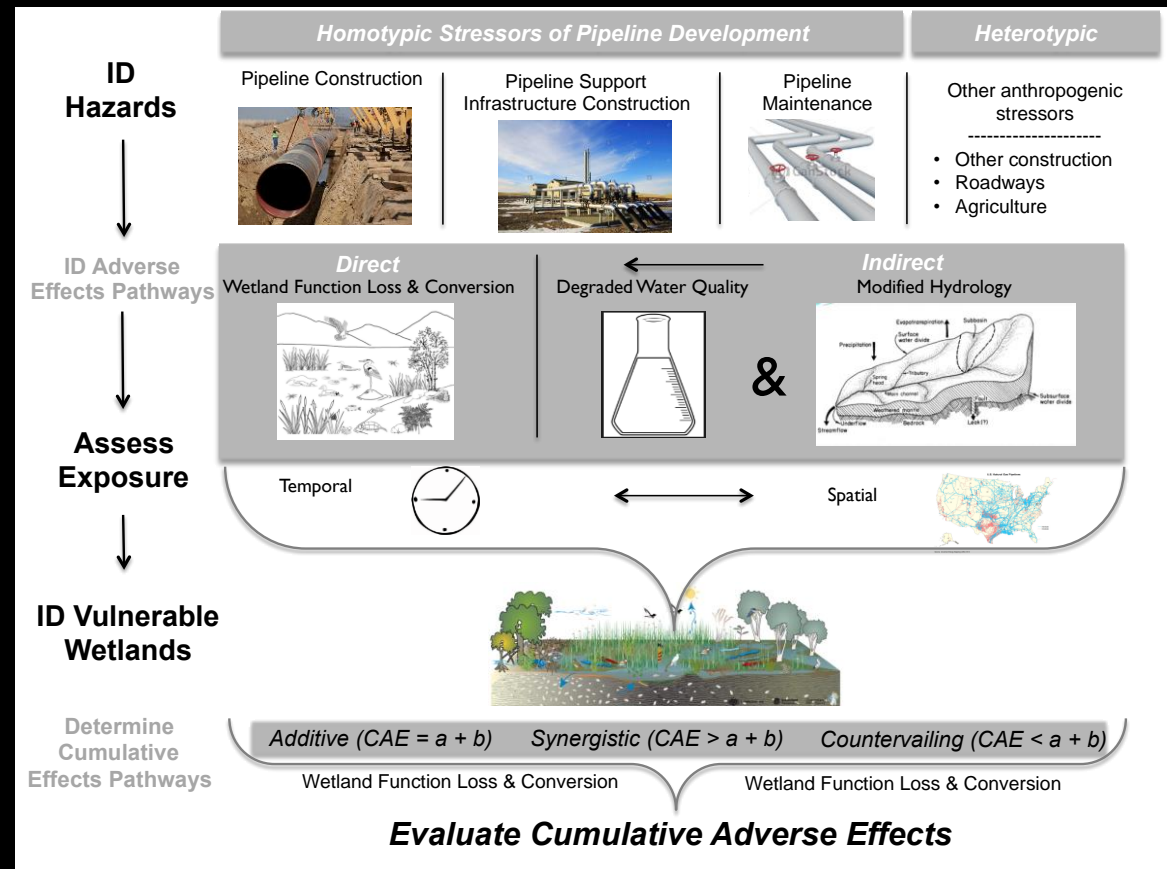
- ◎ Glossary
 - Master glossary, others
- ◎ Acronyms
 - Master acronym list, others
- ◎ Language

- ◎ Consultants and regulators need to speak the same language
- ◎ Be careful about multi-state projects

Cumulative Impacts to Aquatic Resources

- From the Cumulative Impacts Subworkgroup

ASWM Webinar
 Tuesday, July 24
 3:00 pm ET



Best Practices for an Effective §401 Process

- ◎ From the BMP Subworkgroup
 - Administrative
 - Pipeline development
 - Legal/regulatory
- ◎ Special considerations



Creating Constructive Relationships Among Parties

- Relationships and history between entities and individuals play a critical role

Don't Forget to Think About:

- What are the relationships among the involved parties? Is there legal basis for these roles?
- Are there historic relationships between the parties? Are these relationships positive or negative? Have staff changed over time, leading to potential relationship changes?

Case Studies and Lessons Learned

- Goal: Prevent avoidable mistakes
- Case studies:
 - Mariner East 2
 - Atlantic Sunrise

JANUARY 03, 2018 | 11:17 AM

DEP suspends all construction on Mariner East 2 pipeline

Susan Phillips ⊕

Jon Hurdle ⊕



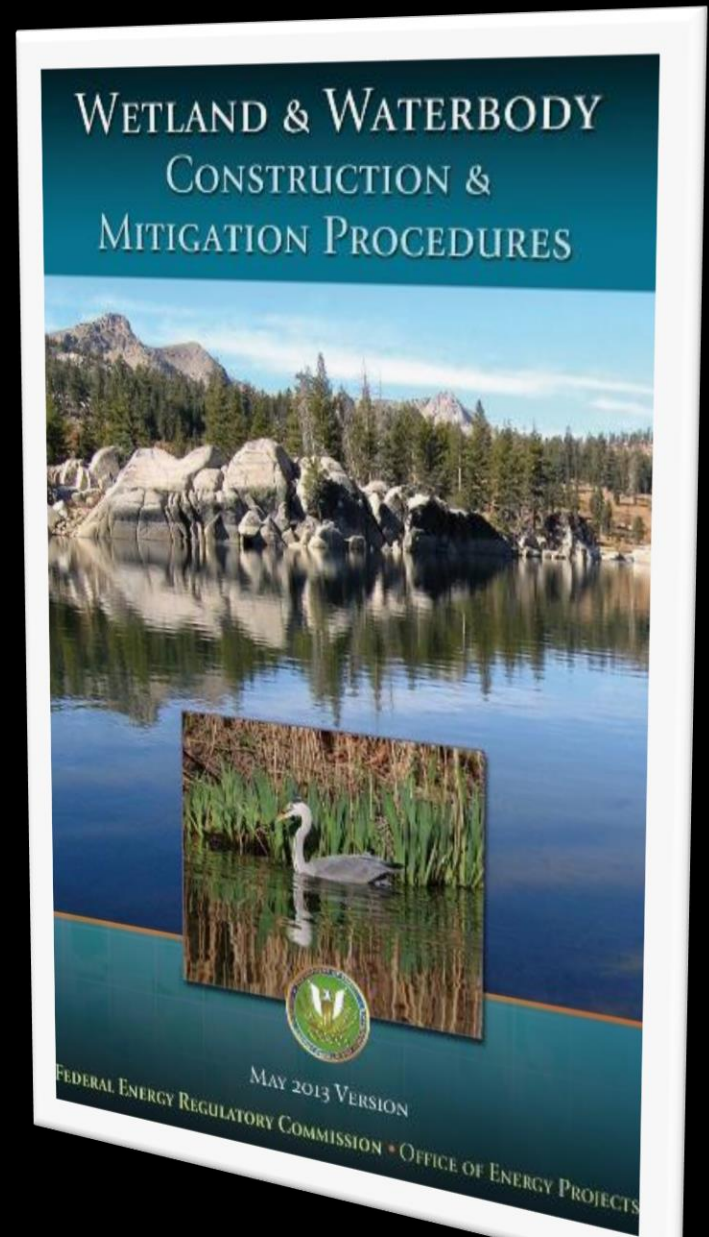
Eric Friedman, right, who lives nearby, takes video of a Mariner East 2 pipeline work site at Shepherd Lane in Glen Mills on Wednesday. Because of permit violations, construction of Sunoco's Mariner East 2 pipeline was halted Wednesday by the state Department of Environmental Protection, which said the company must meet certain conditions before it will be able to resume work.

Pennsylvania's Department of Environmental Protection on Wednesday suspended all construction on Sunoco's Mariner East 2 pipeline, saying it has violated the conditions of two kinds of permits.

Key References and Training Resources

- Reports and webinars from:
 - ASWM
 - Federal agencies
 - State agencies

Resources will be posted at:
www.aswm.org



Evan Hansen

Downstream Strategies

(304) 292-2450

ehansen@downstreamstrategies.com

