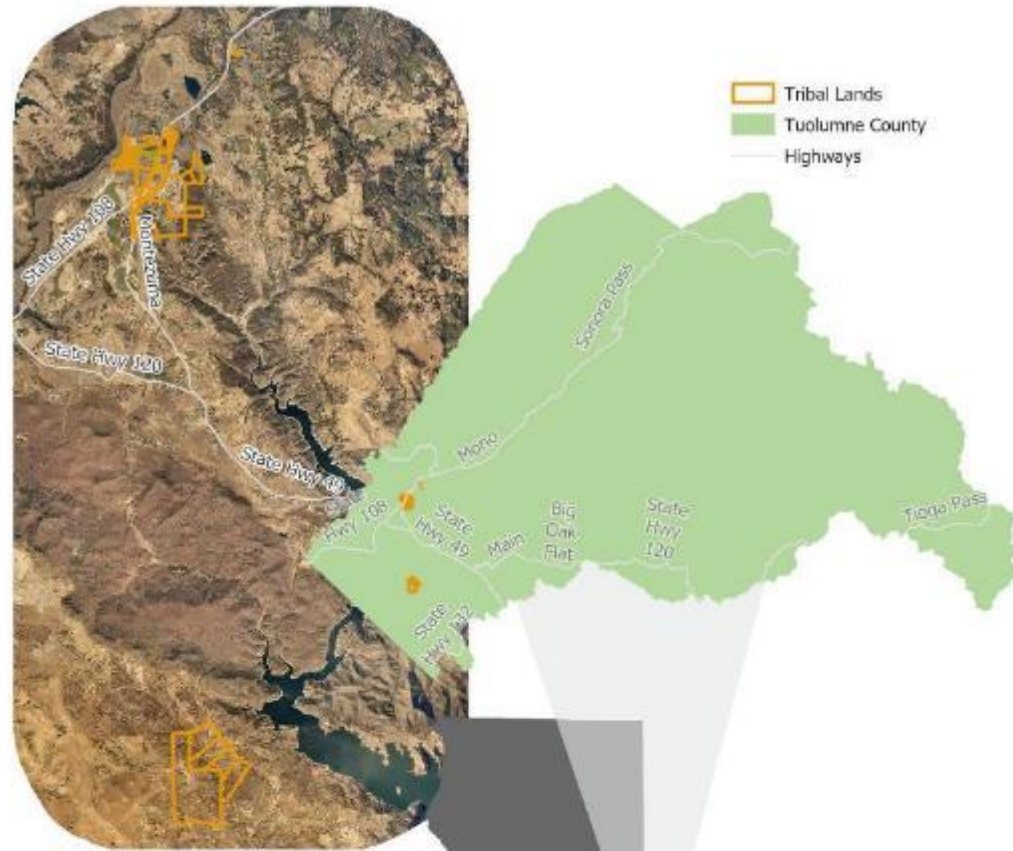


CHICKEN RANCH RANCHERIA WETLAND PROGRAM PLAN



CHICKEN RANCH BACKGROUND



Location of Chicken Ranch Tribal Lands



Parcels: Tuolumne County 2018
County: Tuolumne County 2018
Highways: TIGER 2017
NAD 83 State Plane CA III (R)
B. Hunter July 9, 2020

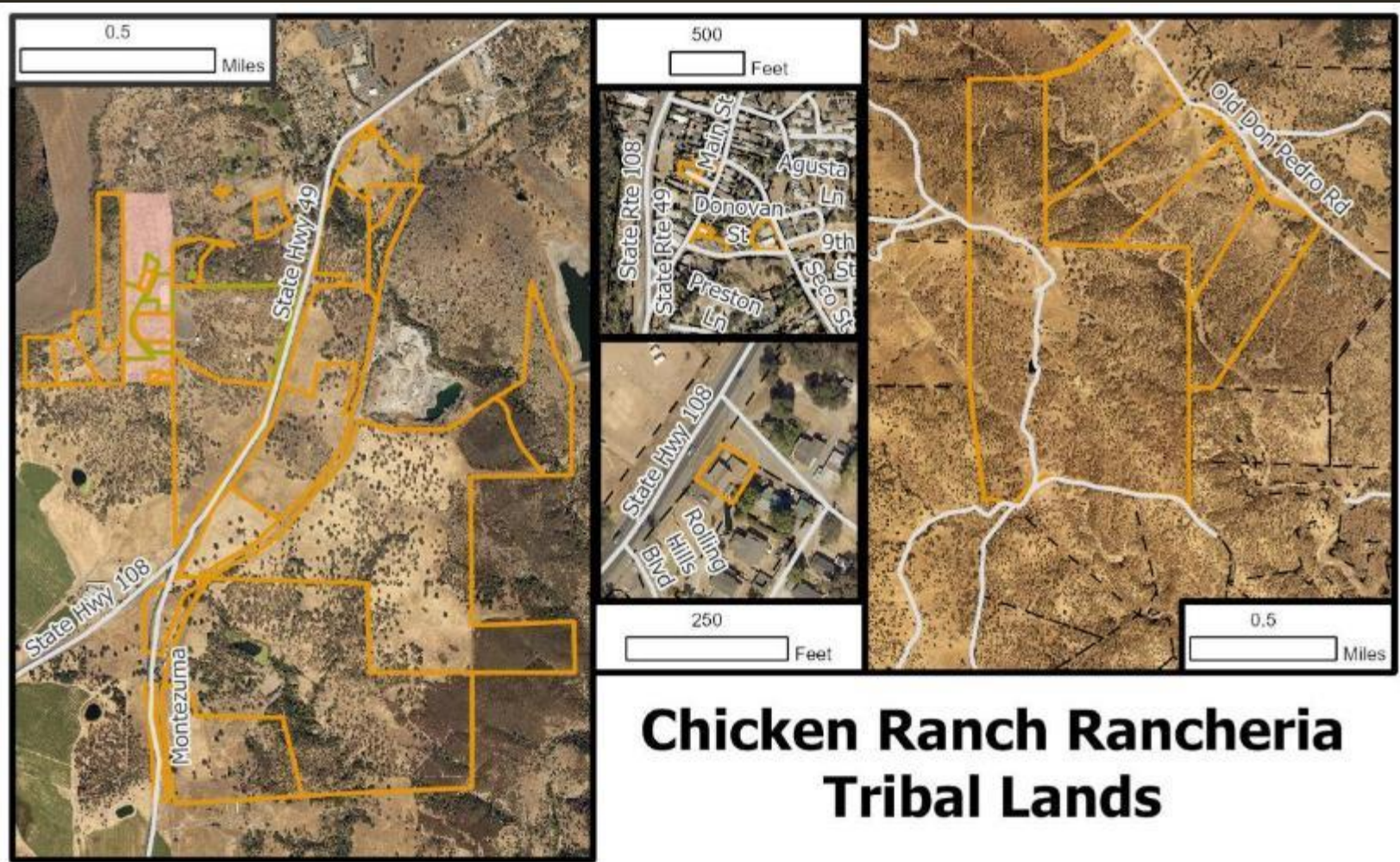
CHICKEN RANCH BACKGROUND

- Tillie Hardwick Tribe
 - Lost federal recognition in 1958
 - Regained federal recognition in 1985
 - All that was left in Tribal ownership was 3 acres
- Very young Tribal Government



CHICKEN RANCH BACKGROUND

- Tribe has slowly purchased back land
- Own 1923 acres:
 - 52 in Trust (Under Tribal Jurisdiction)
 - 1871 in Fee (Under State and Local Jurisdiction)



Chicken Ranch Rancheria for internal use only.

Parcels: Tuolumne County 2018

Roads: TIGER 2017

Aerial Photo: Tuolumne County 2016

Spatial Reference: NAD 83 State Plane CA III

B. Hunter July 9, 2020

- Tribal Fee Land
- Tribal Trust Land
- Roads
- County Parcels
- Original Reservation



CHICKEN RANCH BACKGROUND

- Tribe is working on building up governmental functions
 - Building Environmental Program
 - Providing better access to tribal lands
 - Expanding government facilities
 - Assessing feasibility of doing agriculture

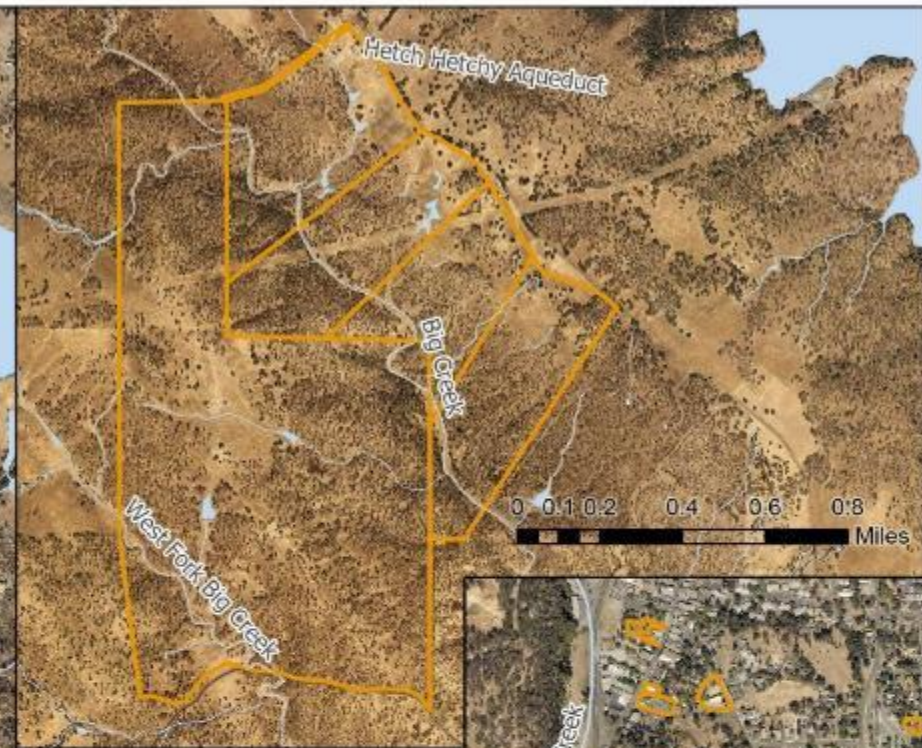


CHICKEN RANCH BACKGROUND

- Tribe knows location of some of its wetlands
 - Does not know health of any wetlands



MAP OF KNOWN WETLANDS



Chicken Ranch Rancheria Property and Known Wetlands

Chicken Ranch Rancheria

Wetlands: AES 2019, HELIX 2019, NWI 2018

Aerial Photos: Tuolumne County 2016

Parcels: Tuolumne County 2018

Spatial Ref: NAD 83 CA State Plane III (ft)

B. Hunter November 11, 2020



CHICKEN RANCH BACKGROUND

- Establishing a Wetland Program Plan now will help encourage thinking about wetlands as the Tribe develops their government and facilities.



WRITING THE WETLAND PROGRAM PLAN

- Talked with Chicken Ranch Economic Development Corp. Board
 - Summarized importance in relation to economic needs
 - Summarized wetland goals that I think Chicken Ranch Economic Development Corps should have
- Talked with Tribal Council
 - Summarized importance in relation to environmental and cultural needs
 - Summarized wetland goals that I think the Tribe should have

WRITING THE WETLAND PROGRAM PLAN

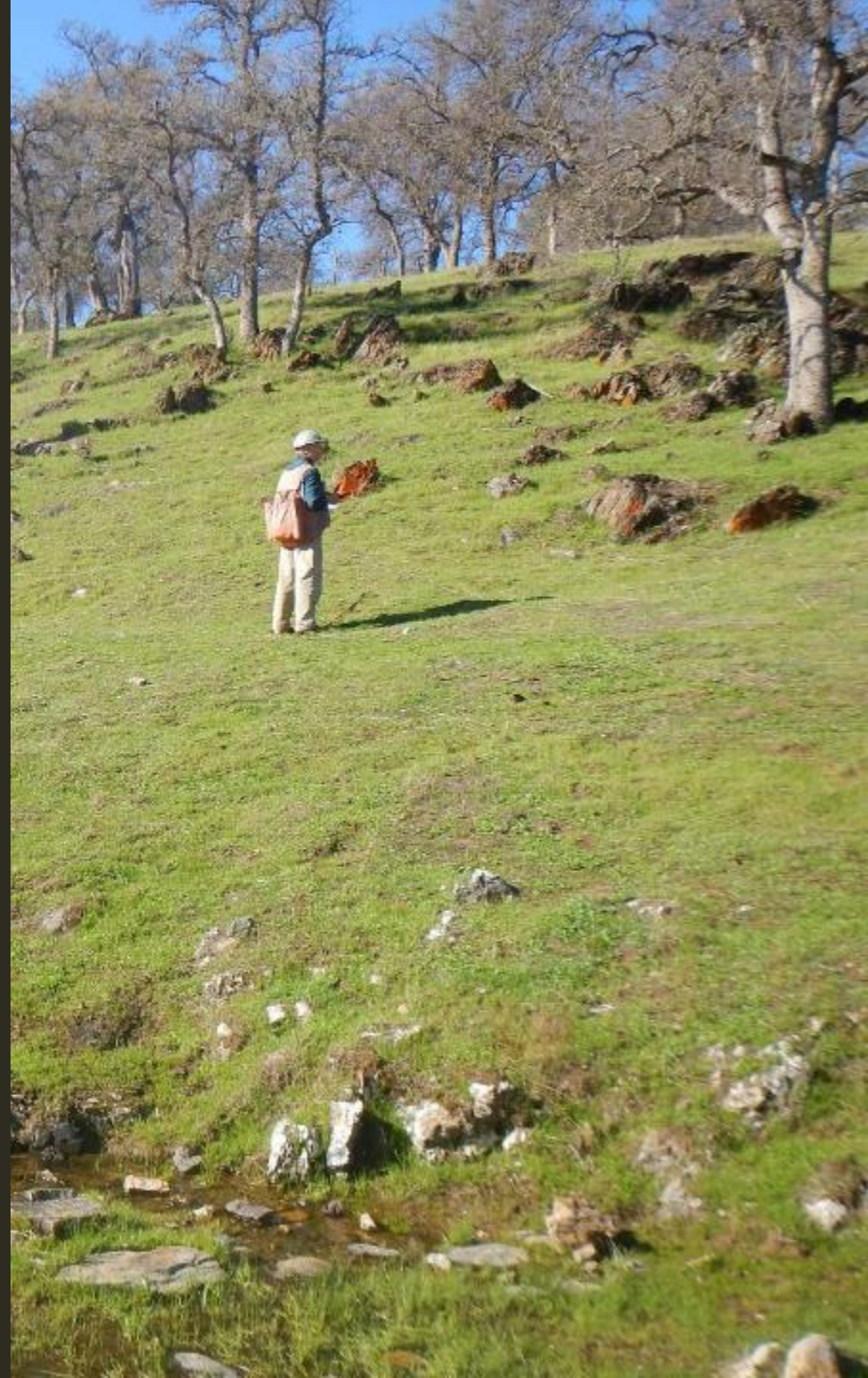
- Took feedback from meetings
- Looked over EPA's guidance on Wetland Program Plans
- Wrote First Draft



WETLAND PROGRAM PLAN

Overall Goals Element 1 Monitoring and Assessment:

- Build staff capacity to conduct wetland delineations and monitoring in-house
- Understand the locations of wetlands on tribal lands
- Understand the health of wetlands on tribal lands
- Conduct long term monitoring



WETLAND PROGRAM PLAN

Overall Goals Element 2 Regulatory Activities:

- Increase staff's ability to understand wetland related regulations and the possible jurisdictional scope that the Tribe could have

Overall Goals Element 3 Restoration and Protection:

- Providing outreach to staff, Tribal Council and Chicken Ranch Economic Development Corporation Board so that they are knowledgeable on wetlands
- Overtime prioritize which wetlands would be beneficial to protect
- Talk with Council to determine if they believe a protection plan is necessary



WETLAND PROGRAM PLAN

Specific Activities:

- Staff attend wetland delineation and monitoring training
- Create QAPP for wetland delineations and monitoring
- Delineate wetlands
- Monitor wetlands
- Provide outreach to staff on locations
- Provide outreach to Tribal Community, Tribal Council and Chicken Ranch Economic Development Corp.



WETLAND PROGRAM PLAN

Specific Activities cont.:

- Establish baseline for wetlands
- Update QAPP if needed
- Determine if wetlands are under jurisdiction of State, Federal or Tribal Government
- Use monitoring data to determine overall health of wetlands
- Research and understand CWA 401 and CWA 404
- Write recommendation report for wetlands that should be protected
- Work with Tribal Council to determine if protection plan is necessary
- Update Wetland Program Plan



WETLAND PROGRAM PLAN

Gave final draft to Tribal Council

- approved without changes

EPA provided comments

- Now need to update and bring to Council



OTHER TASKS

I also attended a wetland delineation training and learned:

- How to identify hydric soils
- How to dig soil pits for hydric soils identification



[This Photo](#) by Unknown Author is licensed under [CC BY](#)

OTHER TASKS

I also learned:

- How to calculate whether or not the plants communities are hydric



[This Photo](#) by Unknown Author is licensed under [CC BY-NC](#)

OTHER TASKS

I also learned:

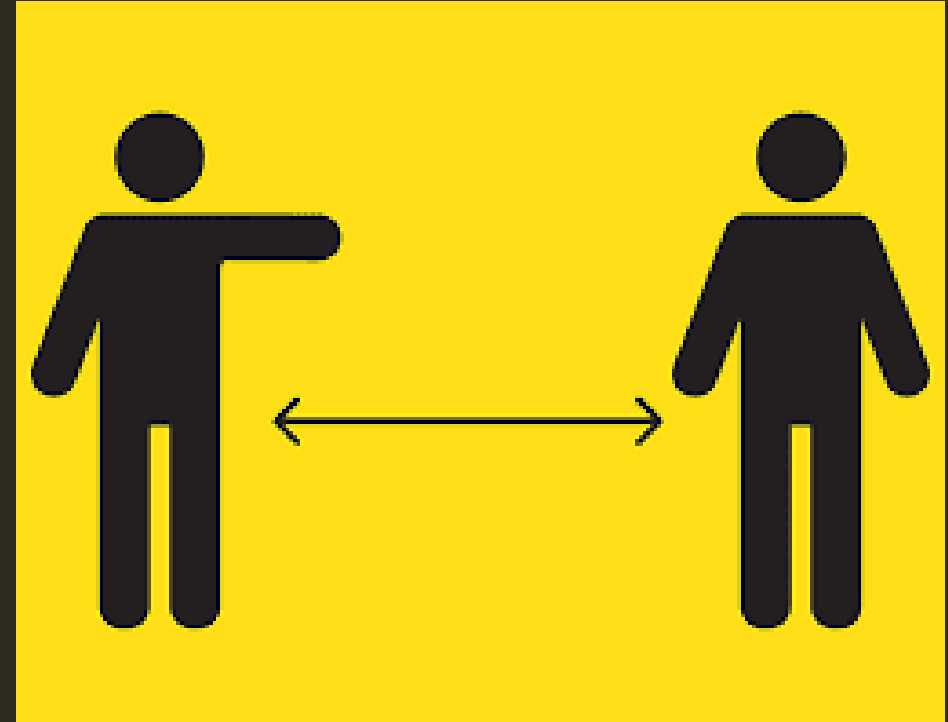
- What to look for to conclude that there is wetland hydrology



DIFFICULTIES

COVID

- Prevented me from taking a wetland monitoring course
- Delayed Council approval for the Wetland Program Plan
- Made wetland delineation training more difficult
 - Most of the training was online
 - 2 days of field training with social distancing



[This Photo](#) by Unknown Author is licensed under [CC BY-NC-ND](#)

DIFFICULTIES

Wetland Delineation Training

- Hard to learn online
- Reviewed wetland Pre-Jurisdictional Reports that consultants have done on tribal lands
 - These documents not only delineate wetlands but determine what wetlands were
 - Did not learn how to do this in the training
 - Would still need help to learn how to do this
 - Need to review



[This Photo](#) by Unknown Author is licensed under [CC BY-NC-ND](#)

WORKING ON THIS YEAR

Wetland Monitoring Training

- CRAM training
 - Hoping it will not be canceled again for next Spring
- QAPP for Wetland delineations
- QAPP for Wetland Monitoring
- Wetland Monitoring Plan
- Outreach

THANK YOU