

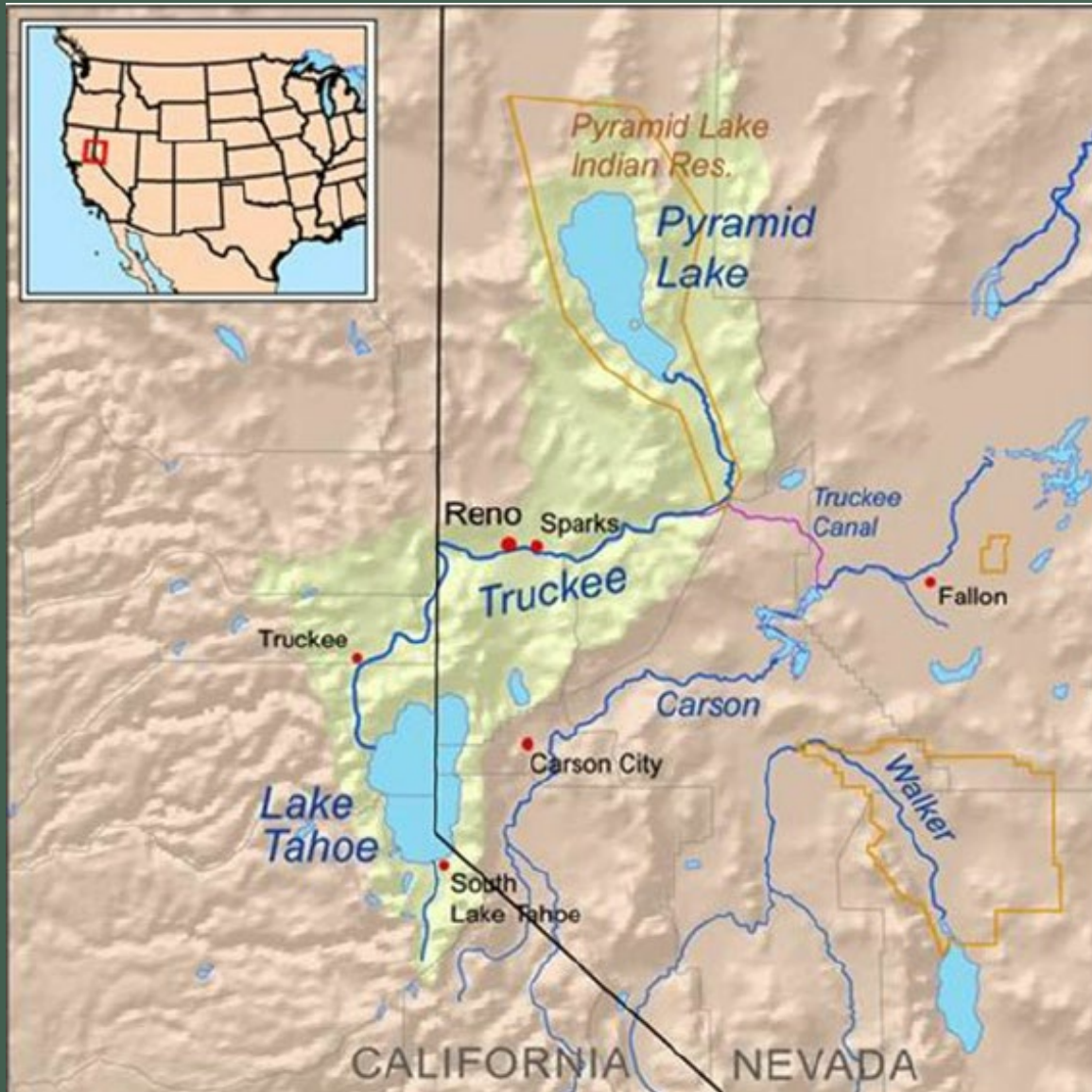
Pyramid Lake Paiute Tribe

Wetlands Program: 15+ years of data, the future of our program, and using technology to improve data collection



EPA Region 9 WPDG Meeting
March 1-2, 2023
Kaylie Wilmot, Wetlands Specialist

Location and wetlands overview



66/75 wetlands assessed so far



PLPT Wetlands Program

MAIN PRIORITIES

- To protect and restore wetlands on the reservation for their economic, cultural, environmental, and human health benefits

IMPORTANCE

- Water quality improvements
- Flood control
- Wildlife habitat
- Cultural

HISTORY

- Program work since the early 2000s
- Consistent data collection since 2015



Wetlands Program Work

Wetland monitoring and identification



Hydrology monitoring



Restoration projects

Education and outreach: Arc GIS and Storymap



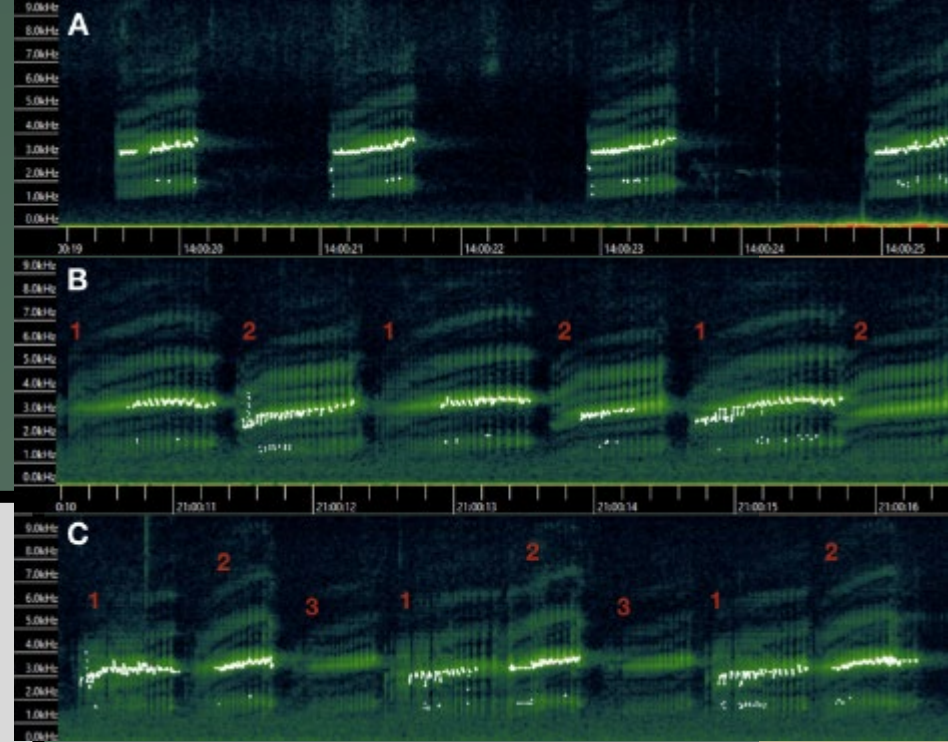
Native seed bank and herbarium collection



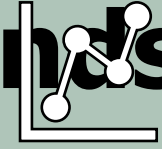
Amphibian monitoring of tribal sensitive species



Modernizing data collection



Creating an IBI specifically for wetlands



- Partnership with California State University at Monterey Bay
- Uses BMI data combined with California Rapid Assessment Method (CRAM) bioassessment scores
- Calculating multimetric indices (MMIs)
- Incorporate IBI into priority scoring for restoration/preservation techniques

Other initiatives

- Utilize educational tools like [ArcGIS Storymaps](#)
 - [Wetlands Storymap](#)
- Visit local schools to give presentations and conduct activities
- Conduct public [volunteer events](#)
Annual youth camp
- Coordination with other programs to remove horse pressure on wetlands

Pyramid Lake Paiute Tribe Wetlands Conservation Work



Introduction Pyramid Lake Watershed Wetlands overview PLPT Wetlands Wetland condition and health Cultural significance and hist...

Wetland condition and health

Maintaining the health of wetland ecosystems is imperative for overall watershed management. Condition assessments consist of multiple factors and activities. The wetlands program has done habitat assessments on the majority of the wetlands beginning in the early 2000's, and in 2022 these assessments were continued.

Bioassessments or biological assessments, are evaluations of wetlands based on all characteristics in that wetland site, including living organisms (biotic factors) and non-living factors (abiotic). The Wetlands Program conducts wetland bioassessments using the California Rapid Assessment Method (CRAM). Taking into account four different attributes with various factors in each, an overall score is calculated. These attributes consist of buffer and landscape, hydrology, physical structure, and biotic structure.

When looking at overall wetland condition all aspects are taken into account. Looking at the surrounding area, the vegetation, water, and general landscape ecology, managers can begin to understand the condition of the wetland. These determinations can then be used to proper future management strategies, as monitoring, restoration work, and protection and conservation.





Thank you



- Contact Information:
 - Kaylie Wilmot
 - Email: kwilmot@plpt.nsn.us
- Wetlands Program website:
 - plptwq.org/wetlands
 - *Storymap on website*