

# Wetland Mapping Consortium Presents:

## NWI Unfinished Business: The Current State of Wetland Mapping in Alaska

Presented By:

**Sydney Thielke**, U.S. Fish and Wildlife Service, Alaska Region

**Andy Robertson**, GeoSpatial Services at Saint Mary's University of Minnesota



Hosted by the Association of State Wetland Managers  
Supported by the U.S. Fish & Wildlife Service





# Agenda

- **Welcome, General Info & Introductions** - 10 minutes
- **Wetland Mapping in Alaska** – 60 minutes
  - Sydney Thielke: History and Goals – 25 minutes
  - Andy Robertson: Data and Technology – 35 minutes
- **Question & Answer** - 20 minutes



# Welcome!

If you have any technical difficulties during the webinar you can send us a question in the webinar question box or call Laura at (207) 892-3399.

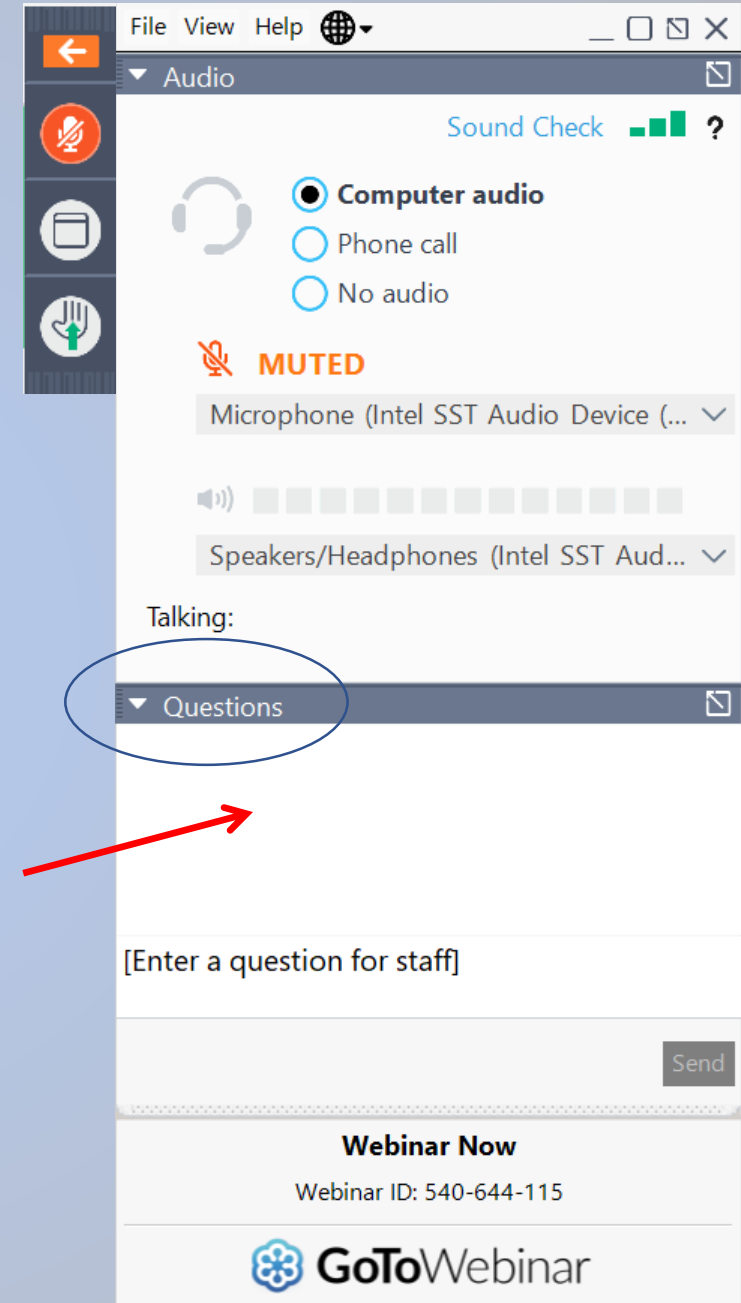
# Webinar Tech Tips

If you are using the telephone to listen to the webinar, please mute both your computer's microphone and speakers



Please submit your questions for the presenters via the question box.

**TIP:** Close out other non-essential programs on your desktop



# Webinar Schedule and Recordings

Association of State Wetland Managers - Protecting the Nation's Wetlands.



**ASWM Upcoming Webinars**

- Wetland Mapping Consortium Webinar: **NWT Unfinished Business: The Current State of Wetland Mapping in Alaska** - 2/12/20
- Compensatory Mitigation Webinar 9: **An Ecological Framework for Reviewing Compensatory Mitigation: How interests in property may affect mitigation projects** - 2/20/20
- ASWM Members' Webinar: **The Future of Restoration of Wetlands from Constructed Impoundments** - 2/26/20

Home ASWM I Am... Webinars & Training Publications Science Wetland Programs Law & Policy Jobs

Search ASWM

**Wetland News Digest**

Sign up to Receive WND

Sponsor WND

More Information and Archived Issues

**Revised WOTUS Rule Released**

The U.S. Environmental Protection Agency and Department of the Army have released the step two Waters of the United States rule, replacing the step one rule published in October 2019. The rule will become effective 60 days after publication in the Federal Register. The pre-publication version can be found here. A public webcast discussing the final rule will be held on February 13, 2020. Registration and other information on the release of the rule can be found here.

**JOIN ASWM**

Sign up to receive Information on Upcoming ASWM Webinars

**Association of State Wetland Managers Annual State/Tribal/Federal Coordination Meeting**

April 7-9, 2020  
National Conservation Training Center  
Shepherdstown, WV

"Building Wetland Program Capacity in an Everchanging Environment"

**Standard Registration Rates Apply Until March 1, 2020**

For more information, please visit the meeting website here.

**ASWM RECENT PUBLICATIONS**

- Healthy Wetlands, Healthy Watersheds: Leveraging State Wetland Restoration and Protection Programs to Improve Watershed Health
- ASWM's Pipeline

**Main Menu**

- Join/Renew
- Contact Us
- Wetland Breaking News - Current Issue
- Webinars
- ASWM Publications
- Wetlands One-Stop Mapping
- Donate
- Volunteer

[www.aswm.org](http://www.aswm.org)



# Webinar Schedule and Recordings

## ASWM Pipeline Permitting Project Webinar Series



List of Past Pipeline Permitting Webinars

Future Webinars

Past Webinars

## Natural Floodplain Functions Alliance Webinar

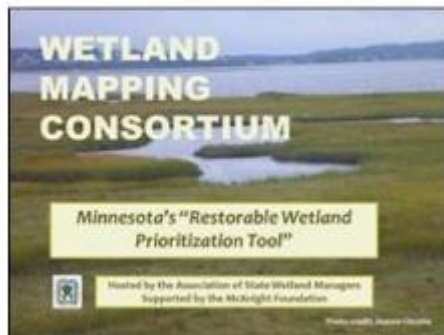


List of Past NFFA Webinars

Future Webinars

Past Webinars

## Wetland Mapping Consortium Webinar (WMC)



List of Past WMC Webinars

Future Webinars

Past Webinars



# Wetland One-Stop Mapping

## Main Menu

- [Join/Renew](#)
- [Contact Us](#)
- [Wetland Breaking News - Current Issue](#)
- [Webinars](#)
- [ASWM Publications](#)
- [Wetlands One-Stop Mapping](#)
- [Donate](#)
- [Volunteer](#)

## Member's Login

  
  
 Remember Me  

[Create an account](#)   
[Forgot your username?](#)  
[Forgot your password?](#)



## WETLANDS ONE-STOP MAPPING

The Association of State Wetland Managers in collaboration with Virginia Tech's Conservation Management Institute (CMI) and the U.S. Fish and Wildlife Service's Northeast Region created Wetlands One-Stop Mapping to provide easy online access to geospatial data on wetlands and soils produced by federal and state agencies. The U.S. Fish and Wildlife Service (FWS), through its National Wetlands Inventory (NWI), has produced wetland geospatial data for most of the country. While some states post data on their own sites, there is not a single place to go for these data. Wetlands One-Stop Mapping provides links to these and other websites. It provides online access to classification tools for adding hydrogeomorphic-type to wetland inventory data and the results of NWI+ projects (maps and reports). The geospatial information is linked to aerial imagery (and topographic maps) through ESRI's ArcGIS (including ArcGIS Explorer) for easy viewing of wetlands, their characteristics, and functions for areas where NWI+ data are available.



The website also provides links to other federal and state websites that contain information on wetlands and geospatial wetland data. Among the national datasets accessible via Wetlands One-Stop Mapping are the NWI's wetlands mapper, USDA's web soil survey, USGS's national hydrography data and hydrologic units (HUCs). Links are also provided to NaturaServe Explorer and the U.S. National Vegetation Classification Hierarchy Explorer along with guidance on how to extract descriptions of wetland plant communities from those sites for specific areas of interest.

## Wetlands One-Stop Mapping Links by Subject

### NWI

- [National Wetlands Inventory \(NWI\)](#)
- [FWS Wetlands Mapper](#)
- [Wetland Primer](#)
- [Federal Standards & Funding for Wetland Mapping](#)
- [National Data Sets & Information](#)

### NWI+

- [NWI+ Data & Information](#)
- [LL/WW Classification](#)
- [NWI+ Data Layers](#)
- [NWI+ Mapper](#)
- [NWI+ Reports](#)

### States

- [State Wetland Mapping Summaries](#)
- [State Wetland Program Websites & Data](#)

### Training

- [Wetland Mapping Training](#)

### Reports and Publications

- [Reports & Publications](#)

### What is NWI+?

NWI+ was a regional initiative by the Northeast Region of the U.S. NWI+ Fish and Wildlife Service's NWI Program. It was supported by the NWI through regional mapping projects funded by the U.S. Fish and Wildlife Service and federal and state cooperators from the mid-1990s to 2015. It began as a regional demonstration initiative in how NWI data could be enhanced with hydrogeomorphic attributes for landscape position, landform, water flow path, and waterbody type (LLWW descriptors) to increase the functionality of NWI data for better characterizing wetlands, for predicting wetland functions at the landscape or watershed level, and for assessing the impact of wetland changes on wetland functions. The expanded database and its outputs were called NWI+ data as the results go beyond the standard NWI mapping. Production of NWI+ data was a special project of the NWI with work mostly in the Northeast Region but also undertaken by some states (e.g., Colorado, Georgia, Montana, and New Mexico) in other Regions when they were updating NWI data. While the demonstration was successful and NWI+ or similar data

## Wetlands One-Stop Mapping Links by Subject

### NWI

- [National Wetlands Inventory \(NWI\)](#)
- [FWS Wetlands Mapper](#)
- [Wetland Primer](#)
- [Federal Standards & Funding for Wetland Mapping](#)
- [National Data Sets & Information](#)

### NWI+

- [NWI+ Data & Information](#)
- [LLWW Classification](#)
- [NWI+ Data Layers](#)
- [NWI+ Mapper](#)
- [NWI+ Reports](#)

### States

- [State Wetland Mapping Summaries](#)
- [State Wetland Program Websites & Data](#)

### Training

- [Wetland Mapping Training](#)

### Reports and Publications

- [Reports & Publications](#)
- [Other Mapping & Wetland Resources](#)

### Other Resources

- [Wetland Plant Community Information](#)
- [Wetland Mapping Consortium](#)
- [Wetland Classification Image Gallery](#)



# Certificates of Participation

## Who can get Certificates of Participation?

- You must be a participant during the entire **live** webinar presentation.
- You must have registered under your own name or if part of a group, verify your participation.
- **You are responsible for sending the ASWM certificate to your accrediting organization.**
- A link to a page with instructions will be sent to everyone who registered in an e-mail one hour after the webinar ends.
- Use the link you are sent to access today's webinar certificate page on the **ClassMarker site.**

## Using *ClassMarker* to Download your Certificate of Participation

- You will need to **create a unique username and password for each certificate.**
- This will take you to the “test” where you will **certify your participation.** If you certify your participation, click “yes.”
- You will be prompted to download your certificate. If you cannot download, go back into *ClassMarker* using your password to print. *Do not pay twice to download.*
- Certificates are free for members and **\$25 per certificate for non-members** if claimed no later than 60 days from the live presentation. After 60 days, certificates are \$25 regardless of membership status. Certificates must be requested within one year of the live presentation.
- For assistance , please contact **Laura Burchill** [laura@aswm.org](mailto:laura@aswm.org) or (207) 892-3399.





## ASWM BENEFITS OF MEMBERSHIP

- Free Participation in our Member's Only Wetland Webinar Series
- Exclusive access to Member's Webinar recordings
- Free Certificates of Participation for all ASWM webinars\*
- Free Subscription to the Association's bi-monthly membership newsletter, Wetland News
- Free Subscription to the Association's weekly news bulletin, Insider's Edition
- Reduced Rates for Participation in ASWM Workshops and Training Sessions
- Opportunities for Involvement in ASWM Committees
- Voting rights in elections of the Board of Directors and all issues presented to members to vote
- Access to a Robust Online Collection of Wetland References
- Access to a National Network of Wetland Professionals
- A Sense of Pride Knowing That You Have Directly Supported Active Wetland Conservation Efforts Nationwide
- Corporate group memberships (11-20+ people) also include logo placement on ASWM's website homepage with a live link
- For a detailed description of benefits, [click here](#).

\*Non-members pay a \$25.00 administrative fee for each requested Certificate of Participation.

<https://www.aswm.org/join-aswm>



# Today's Moderators

**Bill Dooley**

**Policy Analyst**

**Association of State  
Wetland Managers**



# Today's Presenters



**Sydney Thielke**  
**Regional Wetlands  
Coordinator**  
**U.S. Fish and  
Wildlife Service**



**Andy Robertson**  
**Executive Director**  
**Geospatial  
Services at Saint  
Mary's University  
of Minnesota**

# Changing Over to Presenter's Computer



# Questions?



Sydney Thielke

[sydney\\_thielke@fws.gov](mailto:sydney_thielke@fws.gov)

Andy Robertson

[aroberts@smumn.edu](mailto:aroberts@smumn.edu)



**Thank you for your  
participation!**

[www.aswm.org](http://www.aswm.org)

