



NEZ PERCE TRIBE WETLAND PROGRAM

Rue Hewett Hoover

01

Nez Perce Tribe
Background

02

Wetland Grant
Writing Steps

03

Lessons Learned
and
Recommendations

Presentation Outline

**NEZ PERCE
TRIBE
BACKGROUND**

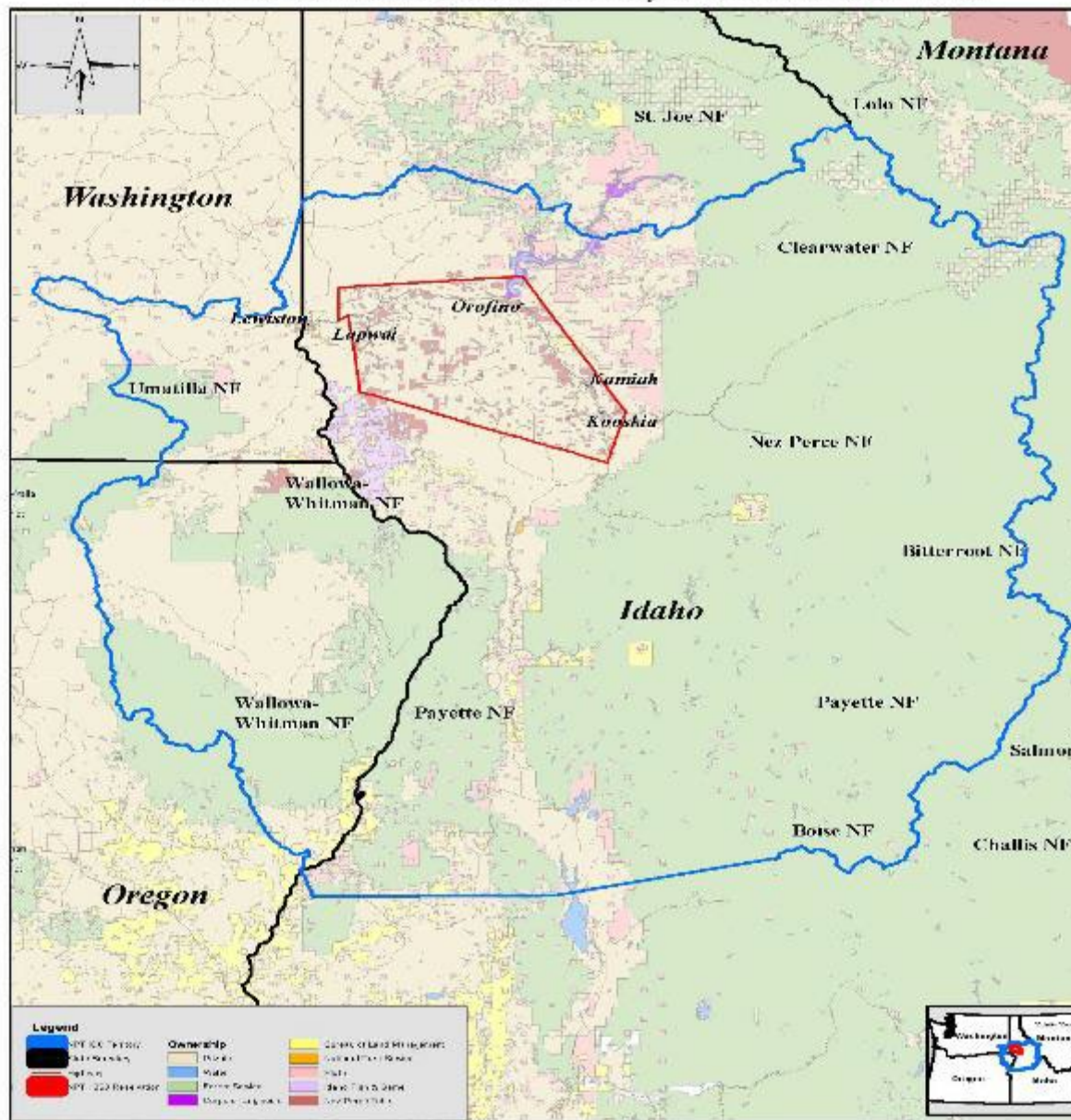
Nez Perce Tribe

Nimiipuu: A Culture of Place

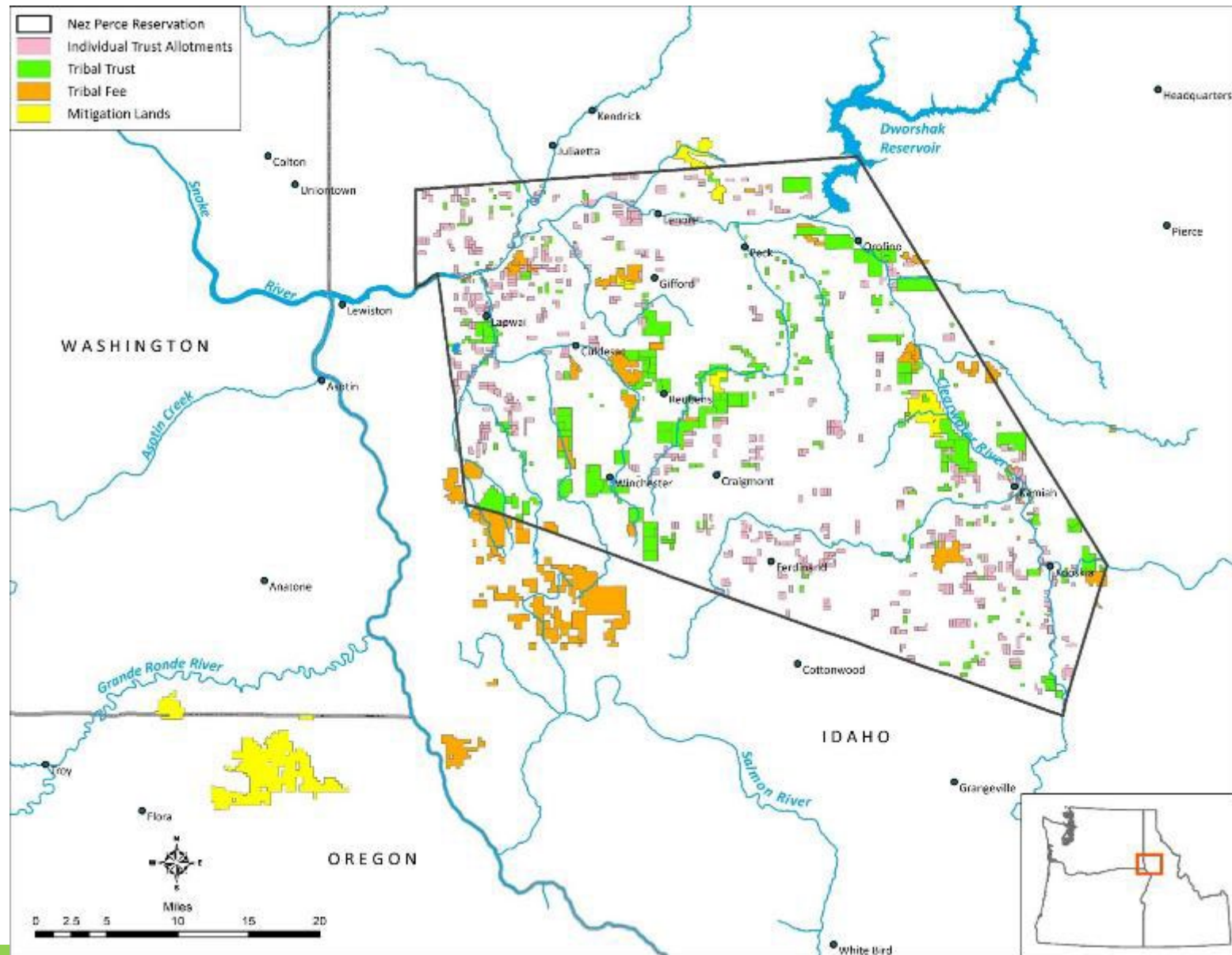


Nimiipuu Homeland

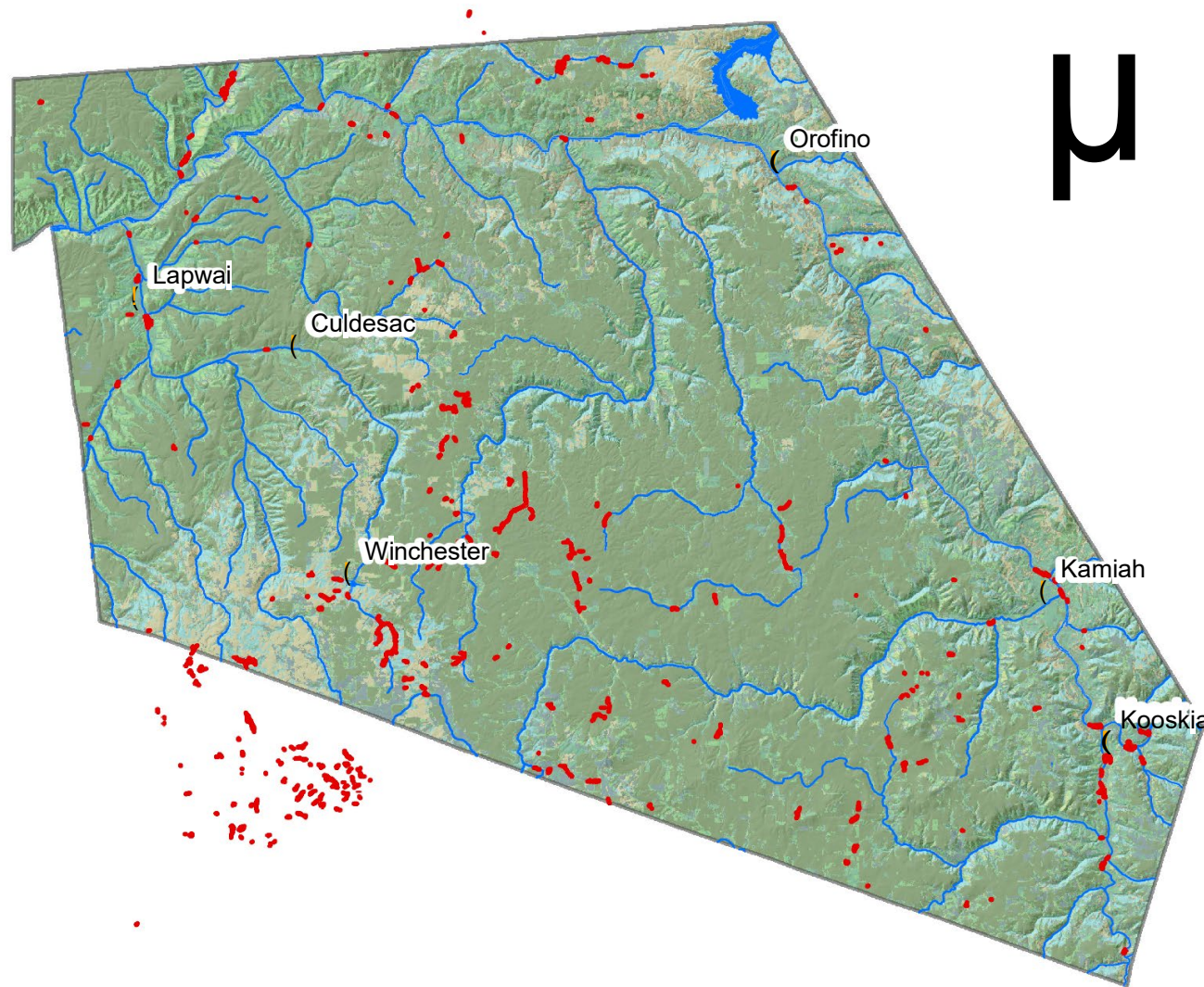
Indian Claims Commission - Territory of the Nez Perce Tribe



Nez Perce Land Ownership -- 2019

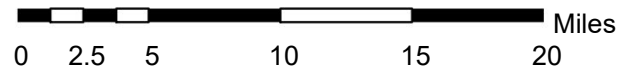


Wetlands on the Nez Perce Reservation



Legend


- Wetlands
- Cities
- Streams
- Reservation
- Boundary Landcover
 - Bare
 - Rock
 - Bare Soil
 - Brush
 - Deciduous Forest
 - Evergreen Forest
 - Grassland
 - Mixed Forest
 - Pasture/Hay/Alfalfa
 - Row Crop
 - Small Grains
 - Urban
 - Water



Program Goals:

- Develop goals and strategy for wetland restoration and protection with partners.
- Develop a monitoring and assessment strategy and schedule for using the WESP-NP (Wetland Ecosystem Services Protocol- Nez Perce) and prioritization list for wetland restoration.
- Continue to monitor the condition of key wetlands on culturally important sites and lease sites.
- Describe reference conditions for various wetland types within watersheds.
- Develop guidance and BMPs for wetland management.
- Review and comment on permits impacting wetlands.

WETLAND GRANT WRITING STEPS



Steps to do before RFP comes out

Look at what the tribe wants or needs for your Wetland Program.



Look at the Wetland Program Core Elements and see what will fit best for your tribe's wetland program.



Use your wetland program plan if you have one.



Once you have the Core Elements you want to target now you need to see how they will fit in your proposal.

Grant Writing Steps

- READ the whole Wetland Program Development Grant RFP.
- KEYOUT what is wanted in the grant – for example, strategic plan, outputs, and outcomes.
- FOLLOW the guided format of the grant deliverables and create a checklist.
- LOOK at the point system and target the areas with more points.
- CREATE the need for your grant – explain how it will develop or refine your program.

Wetland Grant writing steps continued..

- Timeline of activities - be very descriptive.
- Include a detailed budget – use whole dollars, no cents.
- Budget must be clear, readable.
- Double-check your checklist to make sure you hit all elements in the RFP.
- **HAVE SOMEONE READ YOUR PROPOSAL!**

Evaluation Criteria

Point Values	Evaluation Criteria
15 points	<p>1) Description of Need Under this criterion, applications will be evaluated based on how well the applicant demonstrates the need for the project as it pertains to developing or refining a tribal wetland program(s). The description should include: the threats affecting your wetlands/streams/aquatic resources; the need for the particular actions you are proposing; and how the deliverables will lead to an increase in the quality and quantity of wetlands.</p>
20 points	<p>2) Project Tasks Under this criterion, applications will be evaluated based on the extent and quality to which they demonstrate a description of the steps you will take to meet the project product/output(s) and objective(s) including a clear description of project tasks and associated products and whether the applicant's approach (methodology) or the steps they propose is sound.</p>
10 points	<p>3) Milestone Schedule Under this criterion, applications will be evaluated based on the extent and quality to which they provide a clearly articulated milestone schedule that covers each year of the entire project/budget period. This includes a breakout of the project tasks into phases with associated tasks and products and the anticipated dates for the start and completion of each task. In addition, including a clearly articulated approach to ensure that awarded funds will be expended in a timely and efficient manner will be evaluated.</p>
5 points	<p>4) Budget Under this criterion, applications will be evaluated based on the extent and quality to which they demonstrate the budget detail and whether the proposed costs are reasonable and allowable including whether the applicant identified the requested federal dollars and the total project cost for each component/task for each budget item from Form 424A and the if and how non-federal partners will provide cost share/match and demonstrated the cost-effectiveness and reasonableness of costs and the value of in-kind contributions.</p>
10 points	<p>5) Transfer of Results Under this criterion, applications will be evaluated based on the extent and quality to which they demonstrate the applicant's plan for active transfer of project results (outputs/outcomes), lessons learned, and/or methods to other tribes, intertribal consortia, and/or states, local governments agencies within and beyond their own organization, so that the others can better develop their wetland programs.</p>
15 points	<p>6) Environmental Results: Outputs, Outcomes and Tracking Under this criterion, applications will be evaluated based on the extend and quality to which they demonstrate each of the following elements:</p>

Look at what they are wanting and how much each section is worth.



LESSONS LEARNED AND RECOMMENDATIONS

LESSONS LEARNED

Grants take lots of time so allow enough time to get letters of support and review the budget and get the proposal done. Especially if you need it reviewed by your tribal council.

Be sure to include all letters need for grant - support letters, indirect rate letter.

Get all forms completed on Grants.gov and double-check them - if possible, print them out.

RECOMMENDATIONS

Put your grant into PPG!

Grant requires a 25% match unless placed in a PPG then as low as 0% for tribes.

If not awarded, be sure to follow up for feedback on why you didn't get a grant -sometimes this is the best way to find out what they really want in the grant.

Wetland Development Grants are very competitive, and you are competing with states and other highly qualified agencies. It would be great if there was base funding like other EPA Funded Programs.

A photograph of a vast field of blue and white flowers, likely camas, in the foreground. In the background, there is a dense forest of evergreen trees under a blue sky with light clouds. The text 'THANK YOU' is overlaid in large white letters across the center of the image.

THANK YOU

Rue Hewett Hoover

Nez Perce Tribe

rueh@nezperce.org