

TRIBAL WETLAND PROGRAMS WEBINAR SERIES

# Preparing Quality Assurance Project Plans for Your Tribal Wetland Program

November 2, 2023  
3:00pm – 4:30pm ET

Hosted by the National Association of Wetland  
Managers and Saint Mary's University of  
Minnesota GeoSpatial Services





**If you have any technical difficulties during the webinar, you can send us a question in the webinar question box or call Laura at (207) 892-3399.**

# WEBINAR #8: Preparing Quality Assurance Project Plans for Your Tribal Wetland Program



## Webinar Overview:

Many of the activities undertaken by tribal wetland programs require the preparation and approval of a Quality Assurance Project Plan (QAPP). A QAPP is a project-specific plan that lays out the type and quality of environmental data to be collected, including the quality assurance and quality control measures that will be used to ensure data quality. EPA must approve of a QAPP before the project can begin. This webinar will provide a general introduction to QAPP requirements and EPA's review and approval process for these documents. In addition, an example of recent experience developing a project-specific QAPP for a tribal wetland program will be shared. Throughout the webinar, presenters will share recommendations for QAPP preparation and insights specific to tribal wetland programs.

## Webinar Presenters:

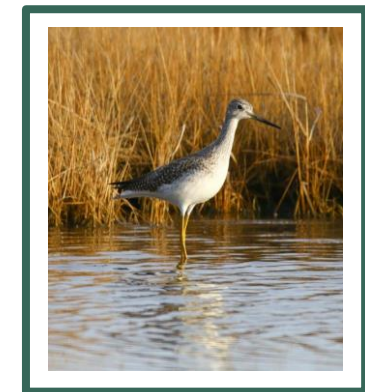


PHOTO CREDIT: THE WETLANDS INSTITUTE

# WEBINAR AGENDA



**Saint Mary's  
University**  
GEOSPATIAL SERVICES



*PHOTO CREDIT: SANDY CRYSTALL*

**Welcome & Introduction**  
(10 minutes)

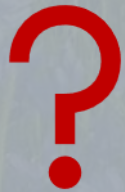
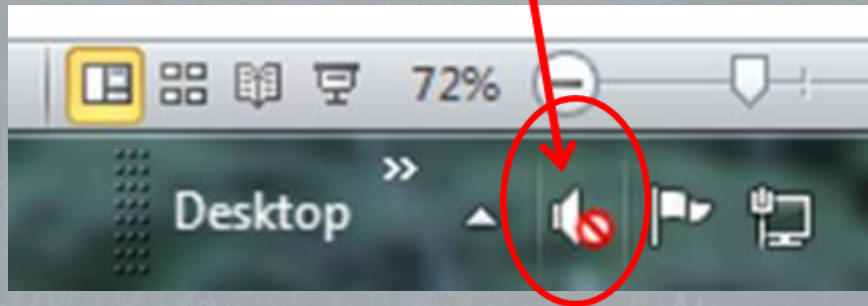
**Presentations**  
(60 minutes)

**Q&A**  
(20 minutes)



# WEBINAR TECH TIPS

If you are using the telephone to listen to the webinar, please mute both your computer's microphone and speakers or it will cause feedback.



## Questions?

Please submit your questions for the presenters via the question box.



**TIP:** Close out other non-essential programs on your desktop.

File View Help

Audio

Sound Check

Computer audio

Phone call

No audio

**MUTED**

Microphone (Intel SST Audio Device (...))

Speakers/Headphones (Intel SST Aud...)

Talking:

Questions

[Enter a question for staff]

Send

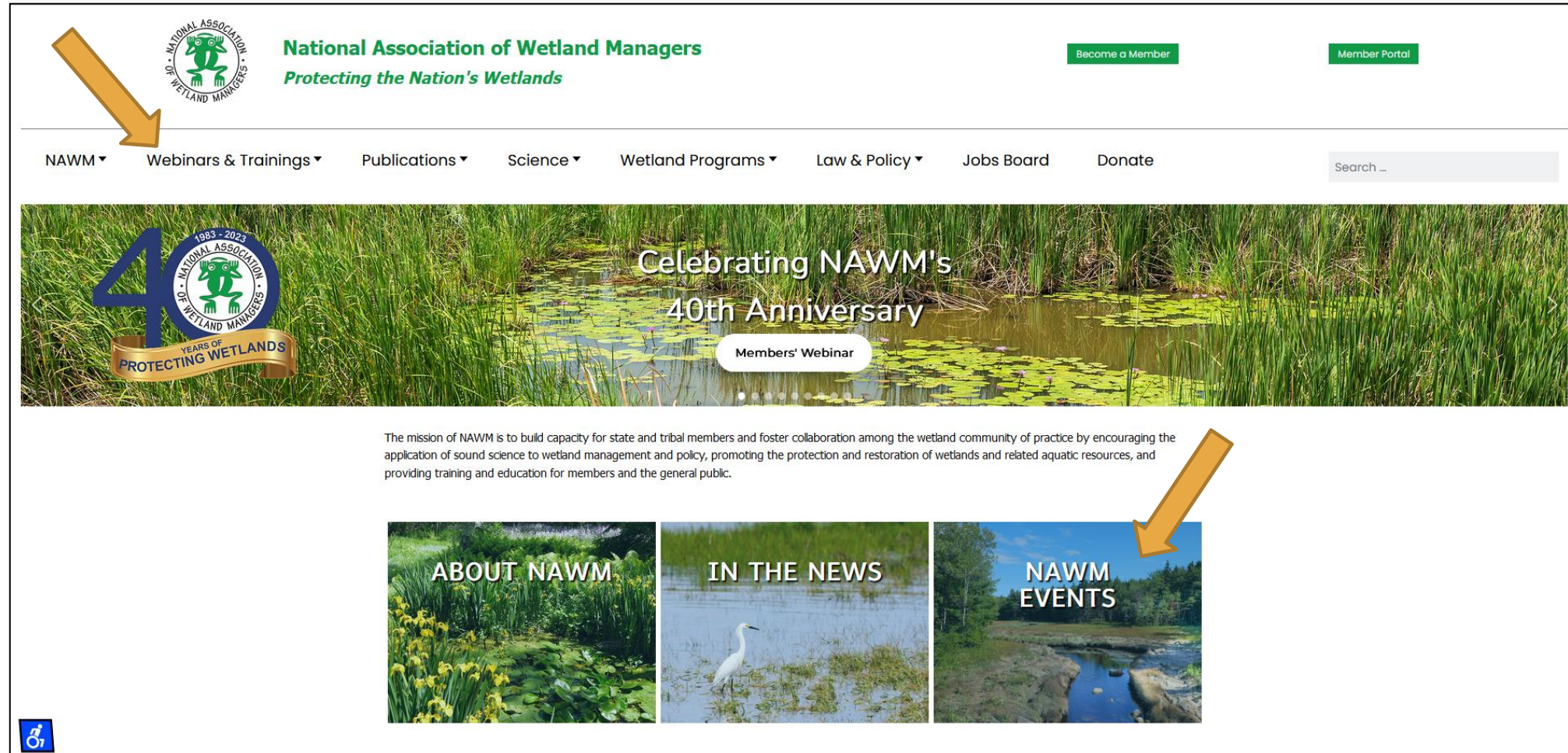
Webinar Now

Webinar ID: 540-644-115

GoToWebinar

# How to Access Information about NAWM Webinars

## www.nawm.org



The screenshot shows the NAWM website homepage. At the top left is the NAWM logo, a green frog in a circle, with an orange arrow pointing to it. To the right of the logo is the text "National Association of Wetland Managers" and "Protecting the Nation's Wetlands". Further right are two green buttons: "Become a Member" and "Member Portal". Below this is a navigation menu with items: "NAWM", "Webinars & Trainings", "Publications", "Science", "Wetland Programs", "Law & Policy", "Jobs Board", and "Donate". A search bar is on the right. The main banner features a wetland scene with a "40th Anniversary" logo (1983-2023) and a "Members' Webinar" button. Below the banner is a mission statement: "The mission of NAWM is to build capacity for state and tribal members and foster collaboration among the wetland community of practice by encouraging the application of sound science to wetland management and policy, promoting the protection and restoration of wetlands and related aquatic resources, and providing training and education for members and the general public." At the bottom are three image-based links: "ABOUT NAWM" (with a yellow flower image), "IN THE NEWS" (with a white egret image), and "NAWM EVENTS" (with a rocky stream image). An orange arrow points to the "NAWM EVENTS" link. A small accessibility icon is in the bottom left corner, and the NAWM logo is in the bottom right corner.

**National Association of Wetland Managers**  
*Protecting the Nation's Wetlands*

[Become a Member](#) [Member Portal](#)

NAWM ▾ [Webinars & Trainings](#) ▾ [Publications](#) ▾ [Science](#) ▾ [Wetland Programs](#) ▾ [Law & Policy](#) ▾ [Jobs Board](#) [Donate](#)



**40** 1983 - 2023  
YEARS OF PROTECTING WETLANDS

**Celebrating NAWM's 40th Anniversary**

[Members' Webinar](#)

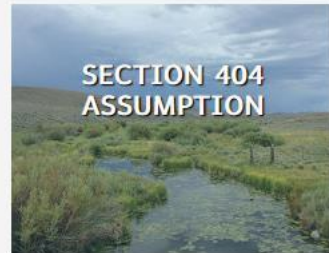
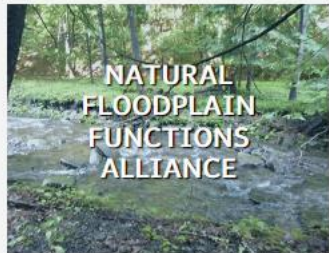
The mission of NAWM is to build capacity for state and tribal members and foster collaboration among the wetland community of practice by encouraging the application of sound science to wetland management and policy, promoting the protection and restoration of wetlands and related aquatic resources, and providing training and education for members and the general public.

[ABOUT NAWM](#) [IN THE NEWS](#) [NAWM EVENTS](#)



# NAWM WEBINARS

(by Webinar Series)



# WEBPAGE WITH RESOURCES



**Saint Mary's  
University**  
GEOSPATIAL SERVICES

## Tribal Wetland Programs

Wetlands and other water resources hold cultural significance to many tribal communities. Wetlands plants may be used for sustenance; for medicinal, healing, and ceremonial purposes; or for weaving baskets and textiles. Fish and wildlife that live in wetlands may also be sources of food. Further, wetlands may be sites of cultural importance to a community. Many tribal communities undertake efforts to protect and restore these valuable resources. Development of a Tribal Wetland Program is an opportunity for a tribal community to identify priorities and implement plans for managing and protecting their wetland resources.

The National Association of Wetland Managers (NAWM) published a Wetland Program Plans Handbook in 2013 that provides information to States and Tribes on how to develop comprehensive wetland programs. In 2022, the U.S. Environmental Protection Agency published a supplemental guide focused on supporting Tribal Nations interested in managing and protecting their wetlands and waters. These references can be downloaded at the links below:

- [NAWM's 2013 Wetland Program Plans Handbook: A resource to Assist States and Tribes in Developing Strategic Approaches to Achieve Comprehensive Wetland Programs](#)
- [EPA's 2022 Protecting Waters and Wetlands in Indian Country: A Guide for Developing Tribal Wetland Management Programs](#)

This webpage is intended to provide tools and resources for tribal wetland program managers to utilize when building and developing their wetland programs. The following pages address various aspects of tribal wetland programs and provide links to relevant resources. Additional resources that may be of interest are available on NAWM's [State Wetland Programs webpage](#).

### **Tribal Wetland Programs Topic Areas**

- [EPA Core Elements Framework and Wetland Program Plans](#)
- [Wetland Program Funding](#)
- [Education and Outreach](#)
- [Wetland Mapping Tools](#)
- [Webinar Recordings and Training Resources](#)

### **Web App Explorer – Find Your Program on the Map!**

Check out the [Indigenous Community Wetland Program Explorer](#) and find your program on the map! The intention of this web app is to share information regarding which communities are participating or have participated in EPA wetland programs. This tool may be used by those involved or wishing to be involved with tribal wetland management to view what other communities may have implemented.



**Find the new  
Tribal Wetland Programs  
webpage and resources at  
[www.nawm.org](http://www.nawm.org)**



# ONLINE TRAINING MODULES



**Saint Mary's  
University**  
GEOSPATIAL SERVICES

**Past Tribal Wetland Program  
Webinars Now Available as Online  
Training Modules with Optional  
Certificates of Completion**

**View the training modules at**  
[www.nawm.org](http://www.nawm.org)

## Tribal Wetland Programs Online Training Series (NonMembers)

The National Association of Wetland Managers (NAWM) and Saint Mary's University of Minnesota GeoSpatial Services (SMUM) developed a series of webinars focused on increasing the capacity of Tribal Communities to protect, restore, and mitigate impacts to tribal wetlands. The webinar series was developed with guidance from an advisory workgroup composed primarily of Tribal wetland managers. The webinars, which were held in 2022 and 2023, cover the basics of starting and building a tribal wetland program and feature presentations from EPA staff and tribal representatives from across the country.

The target audience for this online training series is tribal wetland and aquatic resources staff, including field staff and managers who are interested in forming or developing a wetland program, as well as other wetland and aquatic resource professionals who work with tribal communities.

Additional resources that may be of interest are available on the [Tribal Wetland Programs webpage](#).

### List of Modules in the Training Series (8 modules)

**Module 01:** [Getting Started with Tribal Wetland Plans](#)

**Module 02:** [A Path to Successful EPA Grant Applications for Your Tribal Wetland Program](#)

**Module 03:** [Protecting Waters and Wetlands in Indian Country: An Overview and Case Studies from EPA's New Tribal Wetland Program Guide](#)

**Module 04:** [Developing Your Tribal Wetland Program](#)

**Module 05:** [Monitoring and Assessment: Data Collection and Applications for Tribal Wetland Programs](#)

**Module 06:** [Geospatial Mapping Tools and Techniques for Tribal Wetland Programs](#)

**Module 07:** [Education and Outreach Efforts to Support Tribal Wetland Programs](#) [coming in December 2023]

**Module 08:** [Preparing Quality Assurance Project Plans for Your Tribal Wetland Program](#) [coming in December 2023]



# NAWM BENEFITS OF MEMBERSHIP

- Exclusive access to our live Member's Webinar Series and archived library of webinar recordings (8 per year). Topics alternate between science, policy, and legal issues.
- Free Certificates of Attendance for all NAWM live webinars. (Non-members are charged \$25 for each Certificate.) You will have up to 60 days to retrieve your certificate.
- Access to NAWM Online Training Library with the opportunity to earn free Certificates of Completion
- Free subscription to the NAWM's bi-monthly membership newsletter, Wetland News
- Free subscription to the NAWM's weekly news bulletin, Insider's Edition
- Reduced rates for participation in NAWM workshops and training sessions
- Access to a national network of wetland professionals
- Opportunities for involvement in NAWM committees
- Voting rights in elections of the Board of Directors and all issues presented to members to vote
- Access to a robust online collection of wetland references
- Discount from other organizations for wetland trainings and courses
- A sense of pride knowing that you have directly supported active wetland conservation efforts nationwide
- Groups of 10 or more – include your linked logo on the homepage of the NAWM website
- **New** – Access to a Members-only Federal Policy Tracker Tool
- **Coming Soon** – Members-only Discussion Forums on a range of topics

<https://www.nawm.org/join-nawm>



# CERTIFICATES OF ATTENDANCE

## Who can get Certificates of Attendance?

You must be an attendee during the entire live webinar presentation.

You must have registered under your own name or if part of a group, verify your attendance.

**You are responsible for sending the NAWM certificate to your accrediting organization.**

A link to a page with instructions will be sent to everyone who registered in an e-mail one hour after the webinar ends.  
**Non-members are required to pay \$25 per certificate.**

## Using *ClassMarker* to Download your Certificate of Attendance

You will need to **create a unique username and password for each certificate.**

This will take you to the “test” where you will **certify your participation.** If you certify your participation, click “yes.”

You will be prompted to download your certificate. If you cannot download, go back into *ClassMarker* using your password to print.  
*Do not pay twice to download.*

Certificates are free for NAWM members and **\$25 per certificate for non-members.**

**NEW** – All Certificates must be claimed **no later than 60 days** from the live presentation.

For assistance , please contact **Laura Burchill** at [laura@nawm.org](mailto:laura@nawm.org) or (207) 892-3399.



# TODAY'S MODERATOR



**Saint Mary's  
University**  
GEOSPATIAL SERVICES



**Portia Osborne**  
Project Manager,  
National Association of  
Wetland Managers

# TODAY'S PRESENTERS



**Saint Mary's  
University**  
GEOSPATIAL SERVICES



**Kelly Rodibaugh**  
U.S. EPA Region 5



**Janice Martin**  
Quinault Indian Nation



**Cindy Fields**  
U.S. EPA Region 10

# Guest Biographies



**Saint Mary's  
University**  
GEOSPATIAL SERVICES



**Kelly Rodibaugh** started with the USEPA in September 2020 as a Quality Assurance (QA) Physical Scientist at the EPA Region 5 office in Chicago, IL. Her primary goal is to provide QA support that benefits programs, projects, and participants. Prior to joining the USEPA, Kelly worked at the Texas Commission on Environmental Quality (TCEQ) from 2012-2020, first in data management for the state surface water quality monitoring (SWQM) program and then as a project manager and QA specialist for the Texas Clean Rivers Program. Kelly has a Master of Science in Aquatic Resources from Texas State University in San Marcos, TX and her master's thesis investigated bacterial carbon metabolism variability in a downstream gradient along the Rio Grande/Rio Bravo del Norte.



**Janice Martin** is the Wetland Specialist for the Quinault Indian Nation. In this role, Janice leads the Wetland Program for the Quinault Nation. She oversees the wetland mapping updates within the bounds of the Quinault reservation. The wetland mapping updates involve location, extent, type, quality, ecological function, cultural significance, delineation, GIS mapping and the formulation of a wetland tracking system database for the Tribe. This database currently in production will assist improving upon past management methods by tracking wetland impacts and expanding the knowledge of reservation wetlands through staff training, formalizing protection priorities and updating the near future wetland policy document and Wetland Management Plan. Janice has over 30 years' experience working with an assortment of jurisdictional entities, non-profits and consultants in order to maintain compliance with rules and regulations that aim to protect wetlands and limit wetland loss. Her passion and commitment revolves around wetlands restoration, preservation and protection by promoting the significance of wetland functions and values, specifically relating to hydrological connection, water quality, fish and wildlife habitat, climate change, etc. Janice has held her position as a Professional Wetland Scientist with the Society of Wetland Scientists since 2004, she holds a Bachelor's of Science in Wetlands Ecology and Botany degree from the University of Washington.



**Cindy Fields** has served as EPA's Region 10 Quality Assurance Manager for the past year, but she has worked with environmental information for over 20 years. Her career started as an analytical chemist in an environmental laboratory, where she worked for nine years, eventually moving into a supervisory role and later client services. For the past eleven years, she has worked as a consultant, specifically as lead chemist and QA manager on projects all over the US and Canada. She's written quality assurance project plans; helped develop and lead field events; acted as the liaison between the field, lab and project managers; and validated data using established EPA and State guidelines.



**Saint Mary's  
University**  
GEOSPATIAL SERVICES

CHANGING OVER TO  
PRESENTER'S COMPUTER...

*PHOTO CREDIT: DAN CARY*

# QUESTIONS?



**Saint Mary's  
University**  
GEOSPATIAL SERVICES



**Kelly Rodibaugh**  
[Rodibaugh.Kelly@epa.gov](mailto:Rodibaugh.Kelly@epa.gov)



**Janice Martin**  
[janice.martin@quinault.org](mailto:janice.martin@quinault.org)



**Cindy Fields**  
[Fields.Cindy@epa.gov](mailto:Fields.Cindy@epa.gov)



THANK YOU!



**Saint Mary's  
University**  
GEOSPATIAL SERVICES



PHOTO CREDIT: JOHN SULLIVAN

**National Association of  
Wetland Managers**

(207) 892-3399

[www.nawm.org](http://www.nawm.org)

**Saint Mary's University of MN  
GeoSpatial Services**

(507) 457-8746

[www.geospatialservices.org](http://www.geospatialservices.org)

# Preparing Quality Assurance Project Plans for Your Tribal Wetland Program

*Presenter ~ November 2, 2023*



**Saint Mary's  
University**  
GEOSPATIAL SERVICES



**Kelly Rodibaugh**  
U.S. EPA Region 5

---

## Why Do QA?

---

November 2, 2023

Kelly Rodibaugh, EPA Region 5  
Laboratory and Applied Science Division  
Science and Quality Assurance Branch



# Preparing Quality Assurance Project Plans for Your Tribal Wetland Program

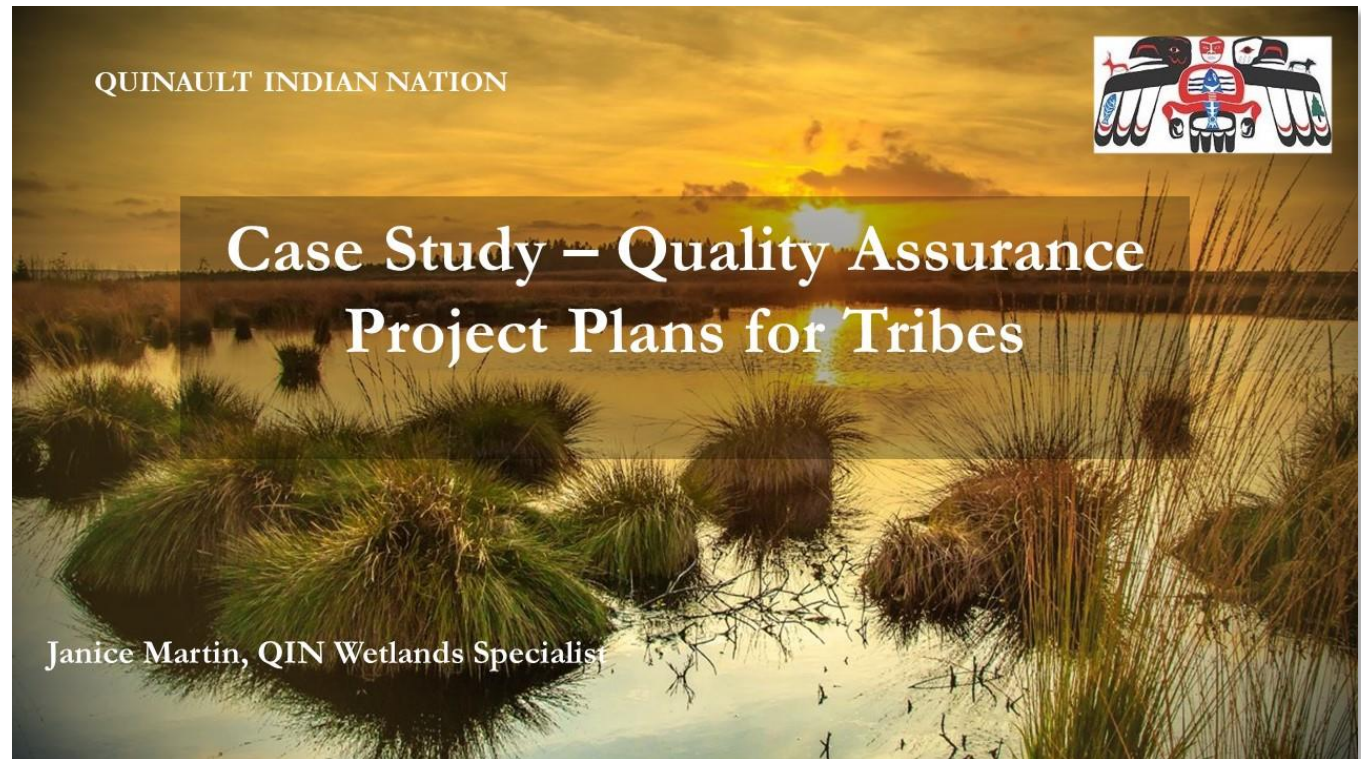
*Presenter ~ November 2, 2023*



**Saint Mary's  
University**  
GEOSPATIAL SERVICES



**Janice Martin**  
Quinault Indian Nation



# Preparing Quality Assurance Project Plans for Your Tribal Wetland Program

*Presenter ~ November 2, 2023*



**Saint Mary's  
University**  
GEOSPATIAL SERVICES



**Cindy Fields**  
U.S. EPA Region 10

## Quality Assurance in Region 10

PRESENTED BY:

CINDY FIELDS, REGION 10 QUALITY ASSURANCE MANAGER